

O. K. TO RELEASE
12-11-46
QUARTERMASTER SUPPLY CATALOG

Higher Echelon and Depot—Spare Parts for

Lantern, Gasoline, Leaded Fuel

QM Stock No. 31-L-408

NOTE.—This catalog also applies to commercial lanterns which have been modified with one of the following conversion sets (Ref. MWO QM 2, 10 April 1944) :

Set, Conversion, Gasoline Lantern, Akron, QM Stock No. 31-S-85.

Set, Conversion, Gasoline Lantern, American, QM Stock No. 31-S-90.

Set, Conversion, Gasoline Lantern, Coleman, QM Stock No. 31-S-95.

1. The Army Service Forces Quartermaster Supply Catalog is published in eight separate sections. The sections listing *Spare Parts* peculiar to each item of standard Quartermaster equipment are as follows:

Section QM 7: Organizational Spare Parts.

Section QM 8: Higher Echelon and Depot Spare Parts.

2. Each pamphlet of section QM 7 and section QM 8 is identified by a symbol in the upper right-hand corner of the outside front cover. Each symbol consists of one of the following sets of letters followed by a number. The number facilitates identification of each pamphlet in the index section of the Quartermaster Supply Catalog, which is Section QM 2:

MHE (Materials Handling Equipment).

SPV (Equipment Installed in Special Purpose Vehicles).

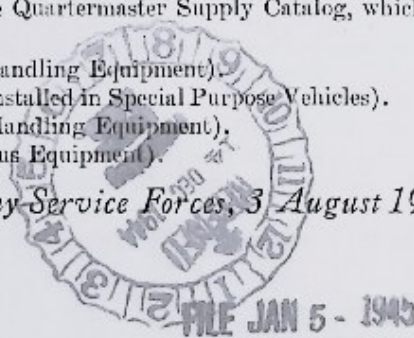
PHE (Petroleum Handling Equipment).

MISC (Miscellaneous Equipment).

Headquarters, Army Service Forces, 3 August 1944

AGO 380B 595302*-44

1



QM 8-MISC 1

3. Section QM 7, *Organizational Spare Parts*: This section lists the spare parts, accessories, tools, and supplies furnished with each item of equipment, and indicates allowances of organizational spare parts authorized organizations.

4. Section QM 8, *Higher Echelon and Depot Spare Parts*: Higher echelon spare parts listed in this pamphlet are for *guidance* in establishing quantities of such parts to be issued to supply installations and organizations. Quantities of higher echelon spare parts issued will be adjusted to accommodate existing conditions, and to conform to actual usage of each item as reflected by periodic and systematic analyses of replenishment requisitions. Depot spare parts are listed by time periods and quantity groups in pamphlets of section QM 8 to establish a basis for determining authorized stock levels. Theaters will continually adjust quantities of each spare-parts item established as the theater depot stock level, by analyzing at regular intervals the trend of detailed actual usage disclosed by replenishment requisitions. This procedure will be followed in order to maintain accurately current levels of supply established for each item of spare parts in accordance with prescribed oversea stock control procedures. (See part III, TM 38-205 and W. D. Cir. No. 227, 1944.)

5. Base depot spare parts, as listed in this pamphlet, will be used as a basis to compute quantities of spare parts to be supplied automatically as initial issues to depots in oversea theaters of operation, and as a guide for submitting replenishment requisitions based upon the period of time for which theater stock levels are established and the number of items of equipment of each make and model to be maintained. Base depot spare parts, as listed in this pamphlet, consist of estimated average use and replenishment requirements for fifth and lower echelons for 1 year of service of the quantity of the item of equipment indicated. (See W. D. Cir. No. 227, 1944.) Base depot stocks comprise the central source of supply of Quartermaster spare parts for all echelons of maintenance, and for intermediate and forward depots within theaters of operation. These stocks are normally replenished from depots in the United States through ports of embarkation.

6. Initial distribution of pamphlets of section QM 7, applying to miscellaneous equipment, is made automatically to interested troop organizations, Quartermaster supply officers of oversea theaters, Quartermaster depots, Quartermaster sections of Army Service Forces depots, ports of embarkation, and Adjutant General depots. Copies are also packed with initial issues of *Organizational Spare Parts* for applicable items. Adjutant General depots, base commands, and oversea forces are responsible for further necessary distribution to supply officers and other headquarters under their jurisdiction when required.

7. Initial distribution of pamphlets, in section QM 8, applying to miscellaneous equipment, is made automatically to Quartermaster depots,

Quartermaster sections of Army Service Forces depots, ports of embarkation, and Quartermaster supply officers of oversea theaters. Copies are also packed in automatic initial issues of *higher echelon and depot spare parts*. In addition, automatic distribution is made to Adjutant General depots for distribution to appropriate headquarters.

8. Supply officers of organizations and depots are responsible for requisitioning spare parts required for replenishment of authorized allowances and parts required to make necessary repairs to disabled or worn equipment.

9. Pamphlets of section QM 7 and section QM 8 of the Quartermaster Supply Catalog will be used in preparing W. D., A. G. O. Form No. 443 (Property Issue Slips) and W. D., A. G. O. Form No. 445 (Requisition). Correct nomenclature and/or stock numbers or parts numbers furnished in these pamphlets will be used by all organizations and installations for records, reports, correspondence, etc., in operations peculiar to the distribution, storage, issue, and maintenance of all Quartermaster matériel. For the items required, stock numbers listed in pamphlets should be shown in the "Stock No." column of Property Issue Slips and Requisitions. The exact and complete nomenclature as listed in the pamphlets will be used with the unit of measure. Abbreviations should be avoided. In order that Property Issue Slips and Requisitions may be edited and filled with the least possible delay, it is imperative that all pertinent information furnished in the applicable pamphlet be shown. All items appearing on each Property Issue Slip or Requisition will apply to *one major item only*. Do not combine spare-parts requirements for different major items on one Property Issue Slip or Requisition.

10. Property Issue Slips are used by companies and similar units to requisition spare parts. In the zone of interior they are prepared and forwarded through channels to the post, camp, or station Quartermaster property officer. In theaters of operation they are prepared and forwarded through channels to the supply officer of the appropriate higher troop organization, or to designated theater supply organizations.

11. In the zone of interior the Quartermaster property officer of the post, camp, or station requisitions spare parts listed in this pamphlet from the regional depot serving the area in which the installation is located. The requisitions are prepared on W. D., A. G. O. Form No. 445 (Requisition).

12. Requisitions in theaters of operation for items listed in this pamphlet are prepared on W. D., A. G. O. Form No. 445 (Requisition), and are routed to ports of embarkation. Requisitions are there edited and forwarded to appropriate depots for supply, or to Office of The Quartermaster General for administrative action and supply, depending on the control status of the items requisitioned.

QM 8-MISC 1

13. In the zone of interior, channel of supply for spare parts listed in this pamphlet is from regional depot to post, camp, or station Quartermaster property officer who supplies using organizations.

14. In theaters of operation, channel of supply for spare parts listed in this pamphlet is from Army Service Forces or Quartermaster depot to port of embarkation, thence to the base depot, zone of communication, theater of operation. Distribution from the base depot in a theater is made in accordance with procedures established by the theater commander.

15. See figures 3 and 4 for specimen forms and additional instructions for preparing W. D., A. G. O. Form No. 446 (Property Issue Slip) and W. D., A. G. O. Form No. 415 (Requisition). For further information with respect to the preparation of these forms see Army Service Forces Manual M403 and War Department Circular No. 170, 1943, as amended by War Department Circular No. 39, 1944; and section QM 1 of Quartermaster supply catalog.

16. Errors noted in this catalog should be reported promptly to Office of The Quartermaster General, Service Installations Division, Maintenance Branch, Washington 25, D. C.

BASE DEPOT SPARE PARTS, ACCESSORIES, AND TOOLS (ESTIMATED REPLENISHMENT REQUIREMENTS FOR 100 LANTERNS FOR 1 YEAR OF SERVICE)

| QM stock No. | Nomenclature | Unit of measure | Quantity per unit | Base depot stock (per 100)* |
|---|--|-----------------|-------------------|-----------------------------|
| <i>Spare Parts (all items are expendable)</i> | | | | |
| 31-C-63 | CAP, filler, gasoline lantern | Ea. | 1 | 12 |
| 31-G-103 | GENERATOR, gasoline lantern, leaded fuel. | Ea. | 1 | 500 |
| 31-G-365 | GLOBE, gasoline lantern | Ea. | 1 | 200 |
| 31-K-750 | KNOB, valve, gasoline lantern | Ea. | 1 | 5 |
| 31-L-750 | LEATHER, pump gasoline lantern | Ea. | 1 | 100 |
| 31-M-500 | MANTLE, gasoline lantern | Ea. | 1 | 3,300 |
| 31-P-800 | PACKING, valve stem, gasoline lantern | Ea. | 1 | 12 |
| <i>Accessories (all items are expendable)</i> | | | | |
| 31-F-150 | FUNNEL, gasoline lantern | Ea. | 1 | 25 |
| <i>Tools (all items are expendable)</i> | | | | |
| 31-P-1475 | PRICKER, gasoline lantern (component of wrench, gasoline lantern, stock No. 31-W-500). | Ea. | | 200 |
| 31-W-500 | WRENCH, gasoline lantern, with pricker. | Ea. | 1 | 100 |

*Quantities shown in column, "Base Depot Stock" (estimated replenishment requirements for 1 year for 100 lanterns), may be used as a guide to determine spare parts stock levels or allowances for intermediate and forward depots, divisions, and other organizations where required, based upon the number of items to be maintained and the time period for which such stocks are established.



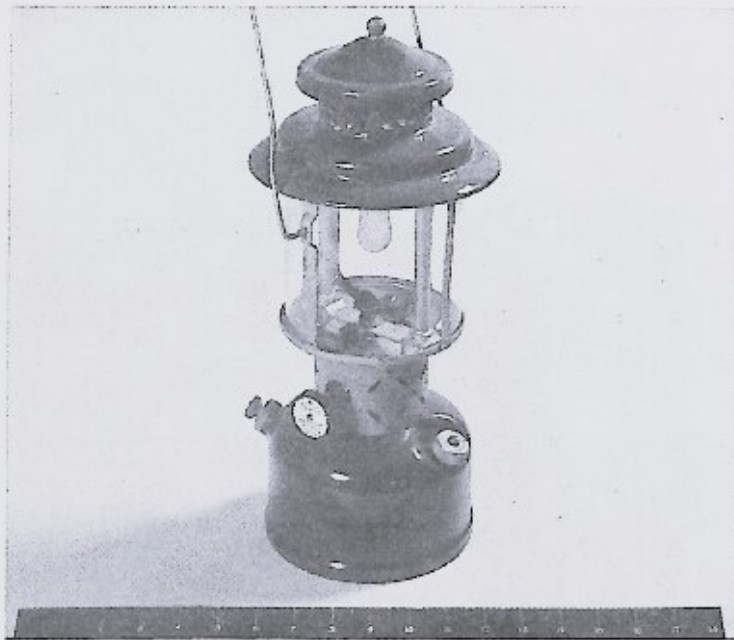
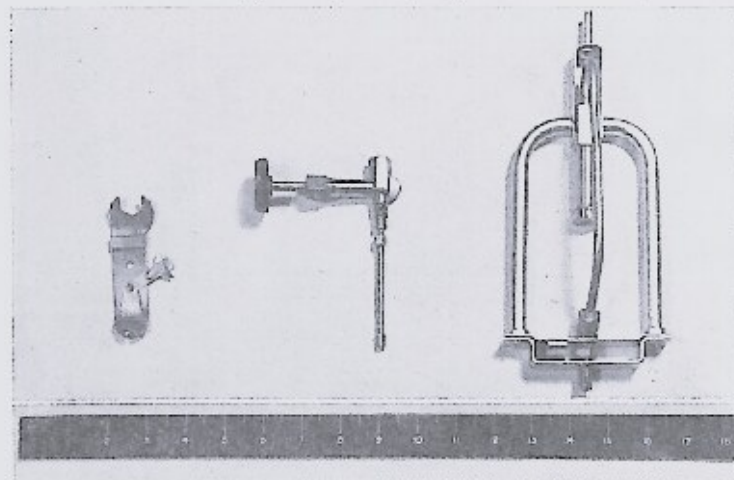


Figure 1. Lantern, gasoline, leaded fuel, QM stock No. 31-L-508.



Wrench (with pricker attached) Valve Burner head

Figure 2. Typical Set, conversion, gasoline lantern (Ref. MWO QM 2).

Note.—Valve not required to modify Coleman commercial lanterns, and a valve is not included in Set, Conversion, Gasoline Lantern, Coleman, QM Stock No. 31-8-95.

AGO 389B

QM 8-MISC 1

When W.D., AGO Form 446 is not available, use W.D., Form No. 440, and alter type or write in corrections as shown here. Marginal notes give instructions for preparing Property Issue Slips.

Give Complete Shipping Instructions

Type "SPARE PARTS" as near Upper Right Hand Corner as is possible.

Prepare Separate Property Issue Slip and State Correct Nomenclature for Each Major Item

Double Space between Items

Group Items Required Under Group Headings as Shown in Paragraphs

State Accurately Stock Number and/or Part Number and Nomenclature as Shown in Paragraphs

The Sum of "Quantity Desired", "On Hand", and "On Order" should Equal "Maximum Authorized Level"

Items marked "R" in parentheses are non-expendable and must be accounted for when they occur on Property Issue Slips or Requisitions by a statement that they have been placed on REPORT OF SERVICE or STATEMENT OF CHARGES.

Emergency requisitions sent by telegraph, teletype, cablegram, telegram or radio, must be confirmed immediately with Property Issue Slip or Requisition marked "Confirming (state identifying date)".

Figure 3, W.D., A.G.O. Form No. 446.

| SPARE PARTS | | TYPE OF ISSUE | | | | |
|---|---|-----------------------------|------------------|----------------------|----------------|------------------|
| PROPERTY ISSUE SLIP REQUISITION: | | ENTIRE QUANTITY | REPAIR QUANTITY | REPLACEMENT QUANTITY | ISSUE QUANTITY | |
| W.D., A.G.O. Form 446 4 August 1953 | | 1 | 0 | 0 | 1 | |
| To: QUARTERMASTER DEPT. OFFICER | | Issue Slip No. _____ | | | | |
| From: Supply Officer | | _____ | | | | |
| Supply Office: 85th Infantry Engineer | | _____ | | | | |
| DATE: 10 June 1954 | | FOR THE COMMANDING OFFICER: | | | | |
| _____ | | John E. ... Capt. Inf. | | | | |
| _____ | | _____ | | | | |
| GROUP | DESCRIPTION | UNIT | MAX. AUTH. LEVEL | ON HAND | ON ORDER | QUANTITY DESIRED |
| | LANTERN, GASOLINE, 160000, 2-1/2" | Co. | 50 | 0 | 0 | 50 |
| | SPARE PARTS | | | | | |
| 21-0-103 | GENERATOR, Gasoline Lantern, 60-16000, 2-1/2" | Co. | 10 | 0 | 0 | 10 |
| 21-1-750 | LANTERN, Pump, Gasoline Lantern | Co. | 10 | 0 | 0 | 10 |
| | TURNS | | | | | |
| 21-0-2475 | FRIGID, Gasoline Lantern, (Component of Lantern, Gasoline Lantern, with Friction, Stock No. 1100-000) | Co. | 10 | 0 | 0 | 10 |
| QUANTITIES SHOWN IN PARENTHESES HAVE BEEN RECEIVED: | | _____ | | | | |
| DATE: 10 June 1954 | | _____ | | | | |



When W.D., AGO Form 415 is not available, use W.D., G.M.C. Form No. 400 and either type or write in corrections as shown here. Marginal notes give instructions for preparing Requisitions.

Indicate PERIOD by one of the following designations:

- (1) "INITIAL" -- first requisition of authorized allowances.
- (2) "REFRESHMENT" -- subsequent requisitions to maintain authorized allowances, covering actual usage of spare parts.
- (3) "SPECIAL" -- requisitions for necessary spare parts not covered by allowances.

Type "SPARE PARTS" in Upper Right Corner

Give complete shipping instructions. Special instructions for packing, marking, routing, etc., should be given at the end of requisition.

Prepare a separate requisition for parts for each major item. Show proper nomenclature, model, type and/or Q.M. Stock Number.

Indicate basis of authority and date delivery is required immediately below major item description.

Double space between items.

Group parts required under group heading as shown in this example.

State accurately Stock Number and/or Part Number and Nomenclature as shown in this example.

The sum of "QUANTITY DESIRED" "Q.M. No.", and "Q.M. No." should equal "MAXIMUM OF AUTHORIZED LEVEL".

REQUISITION

To: U.S. Army, Seattle A.S.F. Depot, Seattle 4, Washington. FORM NO. 415

Requisition No. 015-115-123456, Date: 20 June 1944

SHIP TO: Transportation Officer, Fort Lewis, Washington, WAJPCB 701
Quartermaster Property Officer, Fort Lewis, Washington.

Indicate Organization and Address of Supply Officer Signing Requisition if different from ship to address.

For the Commanding Officer:
James E. Roe
 Major, U.S.A.
 Q.M. Supply Officer

| QUANTITY DESIRED | Q.M. NO. | Q.M. NO. | Q.M. NO. | Q.M. NO. | Q.M. NO. | Q.M. NO. | Q.M. NO. |
|--|--|----------|----------|----------|----------|----------|----------|
| LAMPEN, GASOLINE, LEADED FUEL, Q.M. STOCK NO. 31-1-100 | | | | | | | |
| Basis: To complete authorized allowances. | | | | | | | |
| DELIVERED BY 10 July 1944. | | | | | | | |
| SPARE PARTS | | | | | | | |
| 31-1-103 | CARTRIDGE, Gasoline Lantern, Ea. | 000 | 200 | 0 | 0 | 0 | 500 |
| 31-1-750 | LEATHER, Pump, Gasoline Lantern | Ea. | 105 | 40 | 0 | 0 | 105 |
| ACCESSORIES | | | | | | | |
| 31-1-150 | FUNNEL, Gasoline Lantern | Ea. | 40 | 12 | 0 | 0 | 25 |
| TOOLS | | | | | | | |
| 31-1-500 | SPRING, Gasoline Lantern, w/Ch. folder | Ea. | 105 | 40 | 0 | 0 | 105 |

Items marked "ex" in nomenclature are non-assignable and must be accounted for when requisitioned by a statement that they have been placed in REPORT OF SURVEY or STATEMENT OF CHARGES.

Emergency requisitions sent by telephone, teletype, cablegram, telegram, or radio, must be confirmed immediately with Requisition marked "Confirming (include identifying data)".

Figure 4. W.D., A.G.O. Form No. 415.

