



FIG 5
Closeup of MASS marking on shoulder belt.

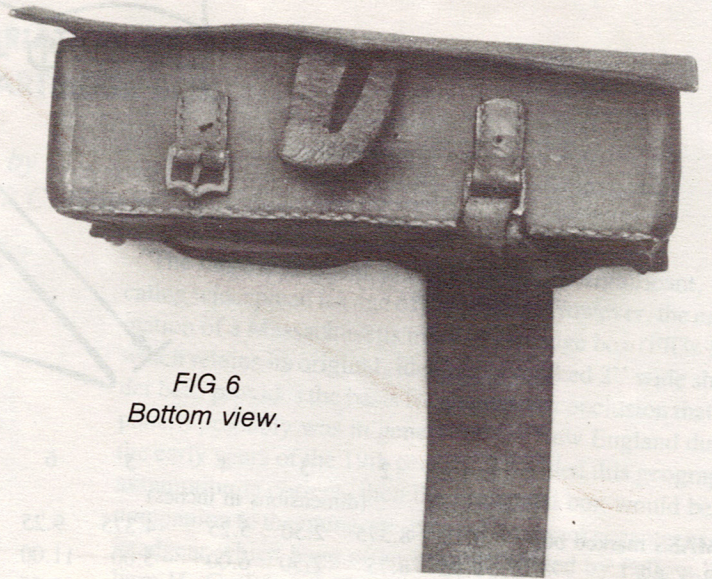


FIG 6
Bottom view.

A MARYLAND SABER

by
J. Craig Nannos

The great expense of maintaining a mounted force limited the numbers allocated by the regular establishment and the state militia. In both cases many of the members came from the upper class of society — a class of horsemen. The enclosed photographs (FIGs 1, 2) show a fine example of the 1807 contract Rose saber and scabbard. The limited production of 2,000, construction of the scabbard, and age make this a much sought after item on the sword market. This example

came from a Baltimore home with the commission (FIG 3) of the Marylander who used the saber. James Moores was commissioned a First Lieutenant in a mounted company of the seventh regimental cavalry district of the State's militia. Our ability to identify the owner and his unit not only enhances the sword but enables the student of this period to place a specific edged weapon with a command.

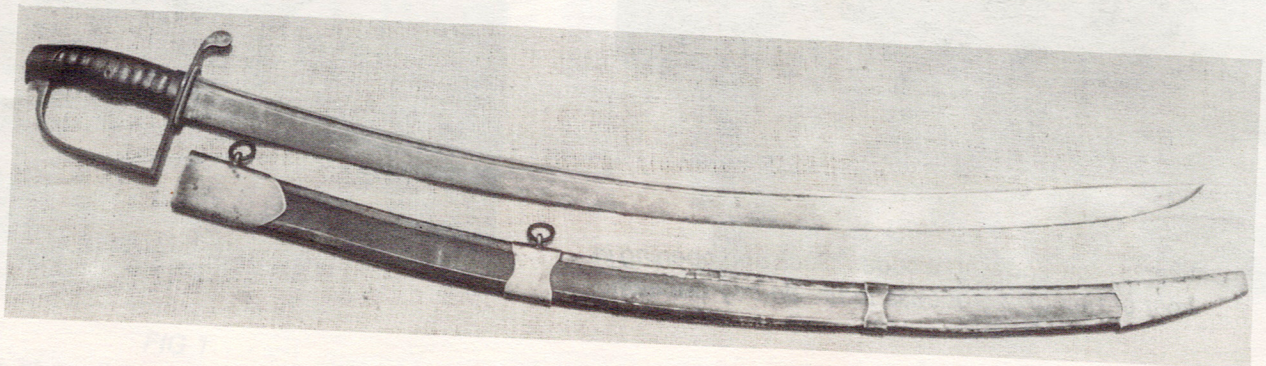


FIG 1
Obverse of the Rose Contract of 1807 cavalry saber and its iron mounted black leather scabbard.

CITIZEN ★ SOLDIER ★ PATRIOT

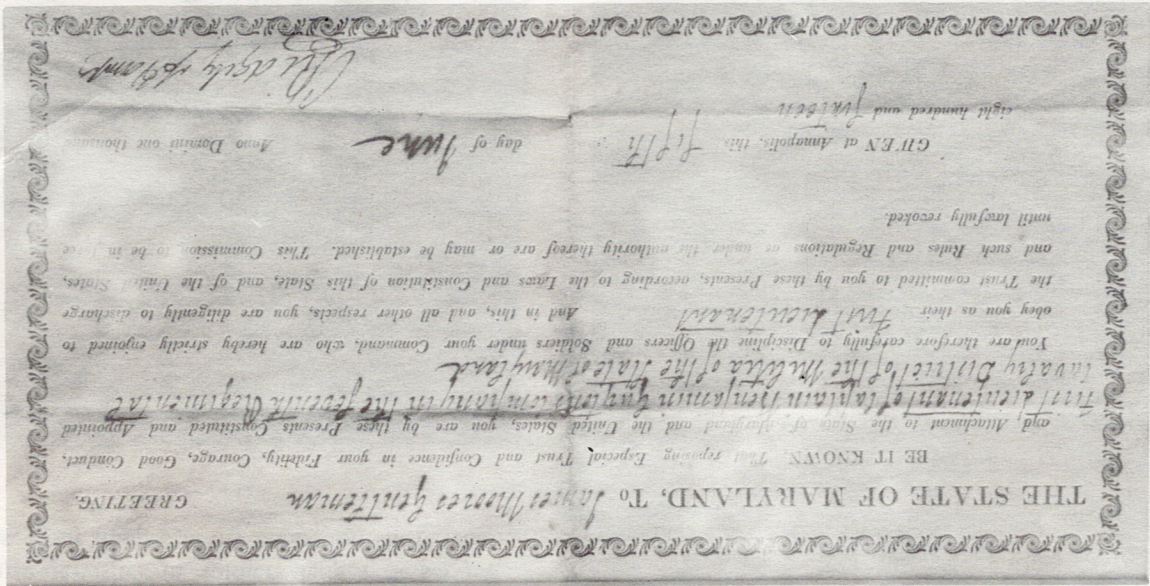
1636-1986



THE NATIONAL GUARD: 350 YEARS OF SERVICE

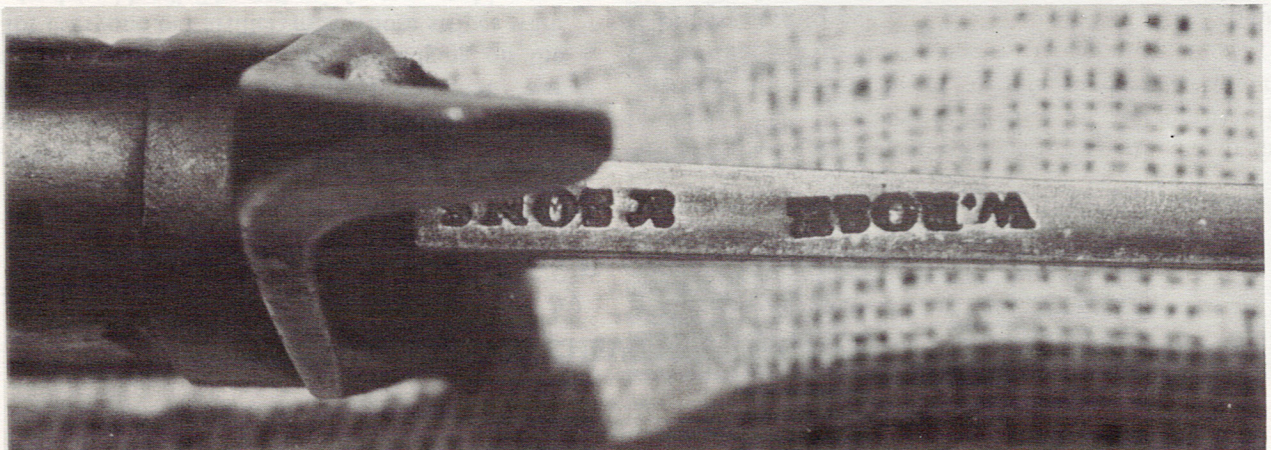
FIG 3 James Moores' original commission dated 5 June 1816.

FIG 3



Marking of "W. Rose & Sons" on back edge of the blade.

FIG 2



Photograph by William T. Whrong III