

ARMY SERVICE FORCES CATALOG

QM 3-2

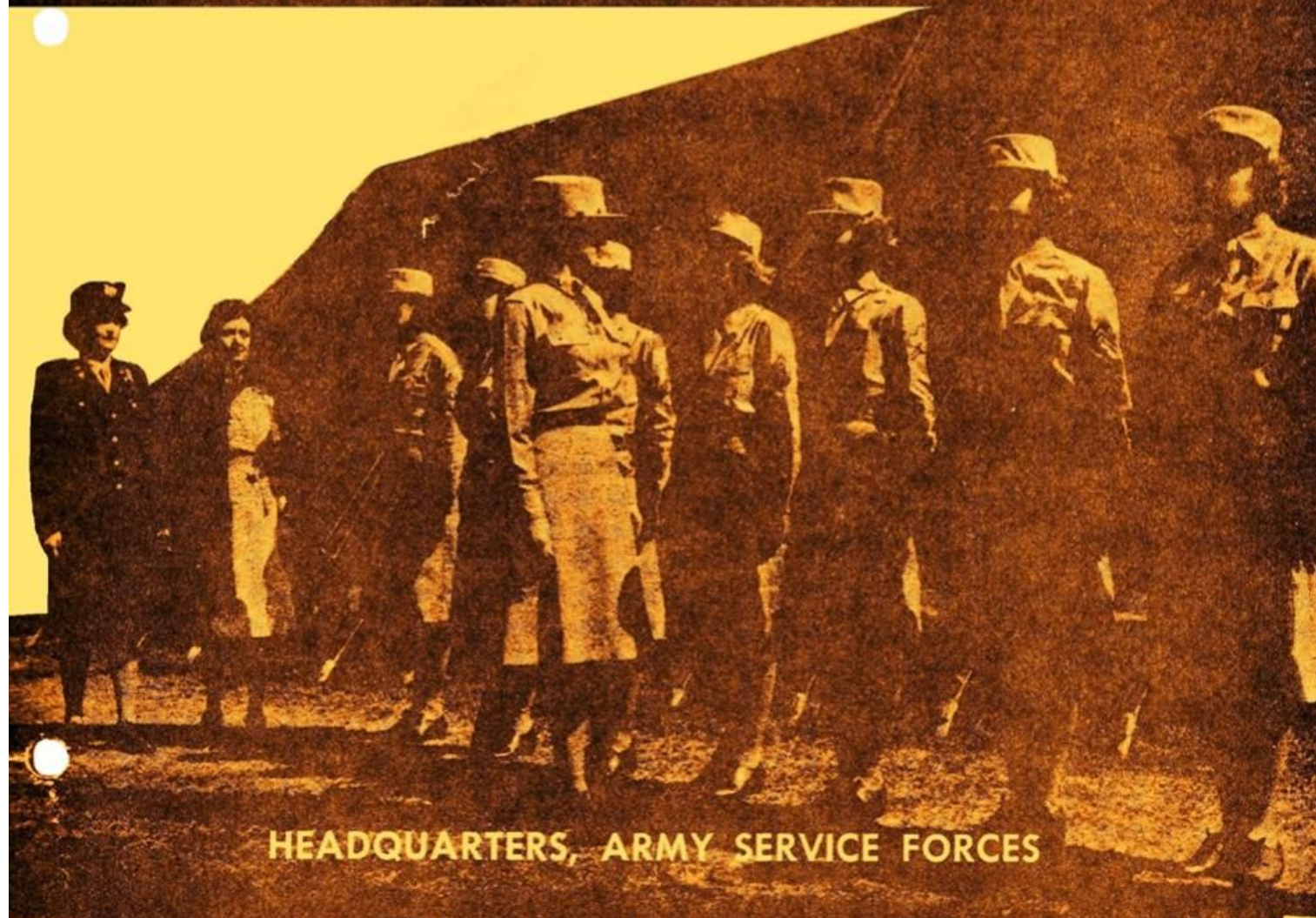
QUARTERMASTER SUPPLY CATALOG

List of Items for Troop Issue

**WACS' AND NURSES'
CLOTHING AND EQUIPMENT**

OQMG CIRCULAR NO. 4—REVISED 7 OCTOBER 1943

This is a reprint of ASF Catalog QM Sec. 2, including C 1, 1 April 1944, and will not be issued to individuals possessing ASF Catalog QM Sec. 2.



HEADQUARTERS, ARMY SERVICE FORCES

HEADQUARTERS, ARMY SERVICE FORCES,
Washington 25, D. C., 7 October 1943

Army Service Forces Quartermaster Supply Catalog, 3-2, List of Items for Troop Issue: WACs' and Nurses' Clothing and Equipment has been prepared under the supervision of the Quartermaster General and is published for the information and guidance of all concerned.

[SPX 400.152 (25 Sep. 43)]

BY COMMAND OF LIEUTENANT GENERAL OMERVELL:

D. STYER,
*Major General, General Staff Corps,
Chief of Staff.*

OFFICIAL:

J. A. ULIO,
*Major General,
Adjutant General.*

QUARTERMASTER SUPPLY CATALOG

QM 3-2

This is a reprint of ASF Catalog QM Sec. 2, including C 1, 1 April 1944, and will not be issued to individuals possessing ASF Catalog QM Sec. 2.

WACs' and Nurses' Clothing and Equipment

CONTENTS

	PAGE
Shoes.....	1
Hosiery.....	2
Uniforms and Dresses.....	3
Coats and Jackets.....	5
Sweaters, Waists and Skirts.....	9
Shirts.....	11
Trousers.....	12
Hats and Caps.....	13
Underwear and Pajamas.....	16
Gloves.....	18
Accessories.....	20
Individual Equipment.....	21
Alphabetical Index.....	25

Quartermaster Supply Catalog

CHANGES }
NO. 1 }

HEADQUARTERS, ARMY SERVICE FORCES,
WASHINGTON 25, D. C., 1 APRIL 1944

THE INTRODUCTION TO ARMY SERVICE FORCES CATALOG, QM SEC. 2, 7
OCTOBER 1943, IS CHANGED TO READ AS FOLLOWS:

INTRODUCTION

1. The Army Service Forces have established a standard catalog numbering system which supersedes the instructions in the Introduction of the Quartermaster Supply Catalog, Sections 1 and 2. The subsequent Sections of the Quartermaster Supply Catalog, will comply with the following system:

QM 1 INTRODUCTION—This section will be an introduction to and explanation of the complete Quartermaster Supply Catalog System.

QM 2 INDEX—This section will be a complete index to the Quartermaster Supply Catalog.

QM 3-1 LIST OF ITEMS FOR TROOP ISSUE, ENLISTED MEN'S CLOTHING AND EQUIPMENT—This section was originally issued as Section 1, "Enlisted Men's Clothing and Equipment".

QM 3-2 LIST OF ITEMS FOR TROOP ISSUE, WACS' AND NURSES' CLOTHING AND EQUIPMENT—This section was originally issued as Section 2, "WACS' and Nurses' Clothing and Equipment."

QM 3-3 LIST OF ITEMS FOR ISSUE TO POSTS, CAMPS AND STATIONS.

QM 3-4 This section will list miscellaneous items for issue.

QM 4 ALLOWANCES OF EXPENDABLE SUPPLIES—This section is now issued as "OQMG Circular 1-18"; when revised it will be published as QM 4.

QM 5 STOCK LIST OF ALL ITEMS—This is the new designation of the "Q Supplement, Federal Standard Stock Catalog".

QM 6 CHESTS, KITS, OUTFITS, AND SETS.

QM 7 ORGANIZATIONAL SPARE PARTS—This section will consist of one pamphlet for each important major item. Each such pamphlet will have an identifying sub-number.

QM 8 HIGHER ECHELON SPARE PARTS—This section will consist of one pamphlet for each important major item. Each pamphlet will bear a sub-number.

2. Each Section of QM 3-1, QM 3-2, QM 3-3, QM 3-4, and QM 6 contains:

- Introduction and instructions necessary to the clarity of the section.
- An Alphabetical Index.
- Illustrations and descriptions of the principal items contained in the section.

3. The illustrations, stock numbers and descriptions appearing in this Catalog are for the convenience and guidance of those concerned so that they may become

familiar with the general appearance of the various items. Types and specifications will vary from time to time; therefore, the illustrations cannot always be used in the case of surveys; over, short and damage reports; or in connection with procurement.

4. The only authority for the requisition and issue of the items contained in this Catalog will be found in Tables of Equipment, Tables of Organization and Equipment, Tables of Allowances, authorized special lists of equipment and OQMG Circular No. 1-16, Allowance of Expendable Supplies (or QM 4 when issued).

5. As the necessary data and information are compiled and published, the remaining sections of the Quartermaster Supply Catalog will be issued. Each section will be a complete unit in itself, and will be saddle wire stitched and punched so that all sections may be bound together in a standard 3-ring binder. As changes are made, either a supplement to the pertinent section will be issued, or the entire section revised.

QM 3-2 (SECTION 2)

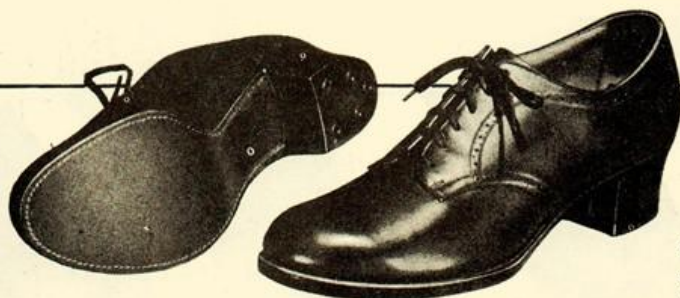
1. This section contains WACS' and Nurses' Clothing and Equipment. It is subdivided into several groupings which are listed in the Table of Contents and are pagetitled on the outside upper corner of each page. The articles in each subdivision have been grouped in relation to their use whenever practicable. Each item is listed under its correct nomenclature and stock number. A complete index listing every item alphabetically and the respective page on which it is found is contained at the end of the section.

2. Where an item has a number of sizes, it is impracticable to list the stock numbers of each size in this Catalog. For example, Shoes, Service, Women's, Low, which appear on Page 1, have a reference to the full range of sizes that the stock numbers cover; i.e., Stock Number 72-S-2375-2 thru 72-S-2384-29. To find the stock number for a specific size, use QM 5 "Stock List of All Items" (Q-Supplement to the Federal Standard Stock Catalog). *In the event the Federal Standard Stock Catalog is not available, requisitions will show standard nomenclature and sizes, omitting stock number.*

[SPX 400.152 (12 Feb. 44)]

By Command of Lieutenant General SOMERVELL:
W. D. STYER,
Major General, General Staff Corps,
Chief of Staff.

OFFICIAL:
J. A. ULIO,
Major General,
Adjutant General.



SHOES, SERVICE, WOMEN'S, LOW

Stock No.

72-S-2375-20—72-S-2384-29

Shoes, service, women's, low, are stylish brown oxfords built for comfort. They have 1½-inch heels, rubber lifts and leather soles.



SHOES, FIELD, WOMEN'S

Stock No. 72-S-116-52—72-S-126-28

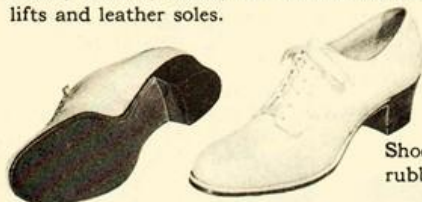
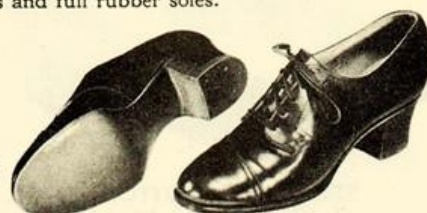
A 4½-inch laced shoe, similar to the Army field shoe, in proper design for women. They have 1-inch rubber heels and full rubber soles.

SHOES, NURSE'S, BLACK

LIMITED STANDARD—To be issued until exhausted.

Stock No. 72-S-770-6—72-S-788-12

Shoes, nurse's, black, are serviceable oxfords with 1¾-inch heels, rubber lifts and leather soles.



SHOES, NURSE'S, WHITE

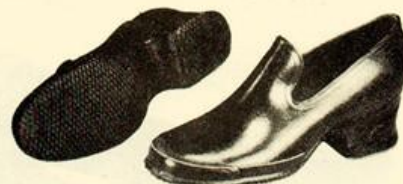
Stock No. 72-S-854-10—72-S-874-8

Shoes, nurse's, white, are serviceable, leather oxfords, with 1½-inch heels, rubber lifts and leather soles.

OVERSHOES, LOW, WOMEN'S

Stock No. 72-O-1410—72-O-1459

A storm rubber type overshoe which fits over all three of the low types of shoes and is especially designed for long wear, having reinforced toes and soles. The size of the rubber corresponds to the size of the shoes.



OVERSHOES, ARCTIC, WOMEN'S, 4-BUCKLE

Stock No. 72-O-735-25—72-O-736-60

An Arctic type overshoe which will fit over the shoes, field, women's, and comes halfway up the leg for protection against snow and cold. They are made of woven, water-repellent, cashmerette upper and have rubber soles. The size of the overshoe corresponds to the size of the shoes.



OVERSHOES, ARCTIC, NURSE'S

LIMITED STANDARD—To be issued until exhausted.

Stock No. 72-O-665—72-O-725

A rubber overshoe with zipper-type fastener, fleece-lined, low Cuban heel and square cuff top.

SHOES, FELT, WOMEN'S

Stock No. 72-S-100—72-S-102

Wool felt shoes, approximately 6 inches high, plain toe, blucher type with a red felt lining and felt outsole, heel, tongue, counter and toe box. They close with eyelets and laces and are worn with wool anklets in cold climates.

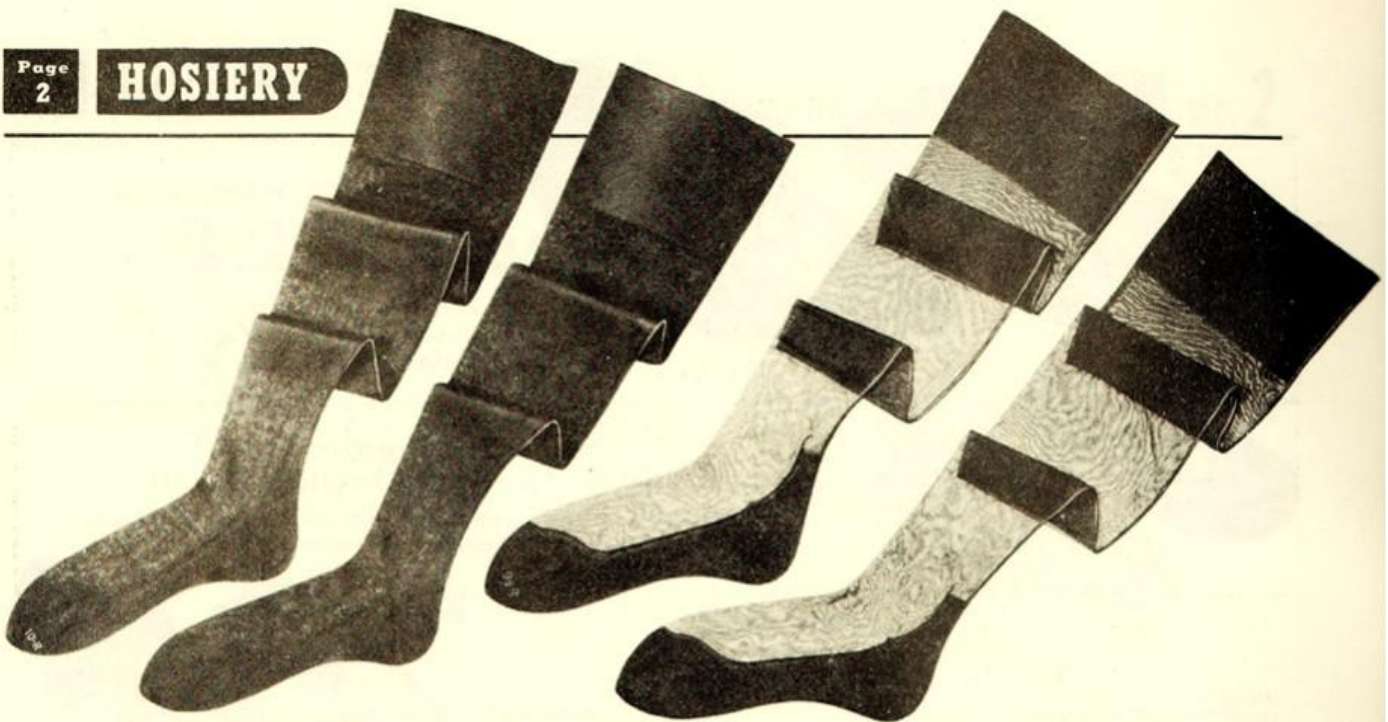


LEGGINGS, CANVAS, WOMEN'S

Stock No. 72-L-62305—72-L-62315

Leggings, canvas, women's, are similar to the leggings worn by the enlisted men. They are for wear normally with the herringbone twill trousers for protection in the field and against insects. ➔





STOCKINGS, COTTON, BEIGE, WOMEN'S

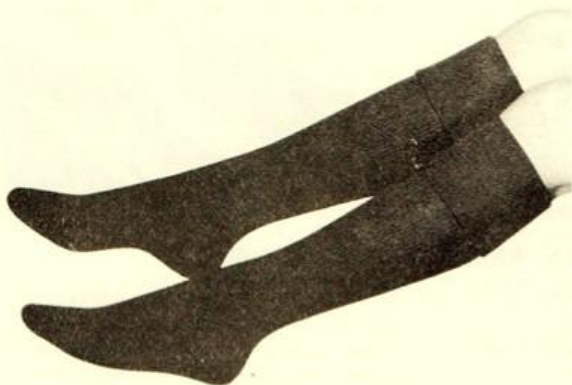
Stock No. 73-S-38755—73-S-38782

A medium weight, mercerized lisle stocking. It is full-fashioned with $4\frac{1}{2}$ -inch garter top and reinforced foot.

STOCKINGS, RAYON, WOMEN'S

Stock No. 73-S-38830—73-S-38864

A medium weight, viscose rayon stocking. It is full-fashioned with $4\frac{1}{2}$ -inch garter top and reinforced foot.



STOCKINGS, WOOL, KNEE LENGTH, WOMEN'S

Stock No. 73-S-39810—73-S-39840

A medium weight, 75% wool-25% cotton stocking with cuff which can be turned up and worn over the knee if extra warmth is desired. The heels and toes are reinforced with spun nylon.



ANKLETS, WOOL, WOMEN'S

Stock No. 73-A-3510—73-A-3550

A medium weight, all-wool sock, English rib design with cuff. The heel and toes are reinforced with cotton.



STOCKINGS, WAC, ANKLET

Stock No. 73-S-39008—73-S-39024

LIMITED STANDARD—To be issued until exhausted.

SOCKS, WOOL, SKI

← **Stock No. 73-S-34397—73-S-34412**

A heavy weight sock for use with cold weather foot-gear.

UNIFORM, NURSE'S, COTTON**LONG SLEEVE, BLUE****Stock No.****55-U-9685—55-U-9705****LONG SLEEVE, WHITE****Stock No.****55-U-9709—55-U-9729****SHORT SLEEVE, BLUE****Stock No.****55-U-9745—55-U-9764****SHORT SLEEVE, WHITE****Stock No.****55-U-9769—55-U-9792**

A one-piece, semi-form-fitting uniform with turn over collar, V-neck and buttoned-front opening. The white uniforms are made of poplin and the blues of seersucker.

**UNIFORM, COTTON
SEERSUCKER, NURSE'S****Stock No. 55-U-9510—55-U-9546**

A seersucker, hospital uniform in wrap-around style to allow for ease of movement. It is cut along sports lines and closes at the waistline with a tie which eliminates buttons or other types of fasteners.



UNIFORMS AND DRESSES



**DRESS, WAC, WORKING, COOK'S
BAKER'S, LAUNDRESS'**

Stock No. 55-D-5031—55-D-5042

A white, cotton, work uniform in wrap-around style to allow ease of movement. It closes at the waistline with a stitched-on belt buttoning at the back, has two patch pockets and short sleeves.



SUIT, WAC, EXERCISE

Stock No. 37-S-3010—37-S-3046

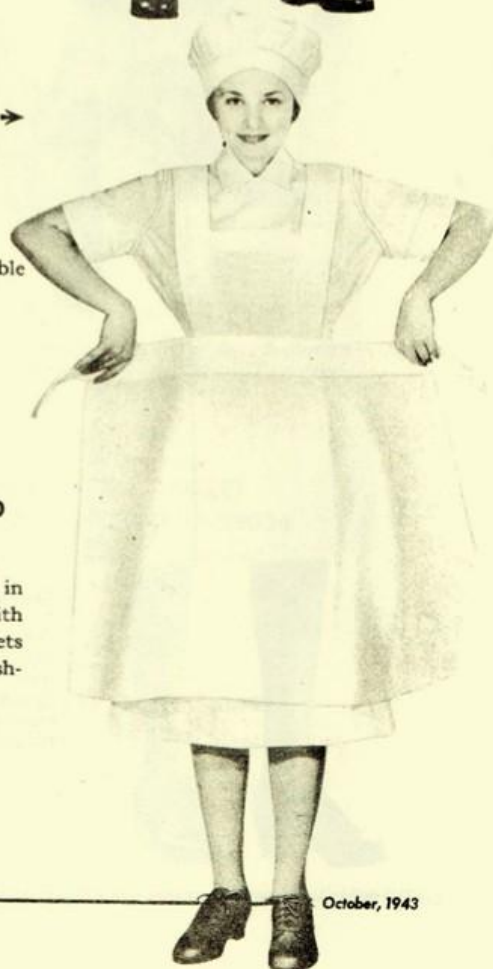
A seersucker sport dress with matching bloomers. It is one-piece, button down the front style with short sleeves and self belt. This fabric requires no ironing.



**APRON, WAC, COOK'S, BAKER'S,
LAUNDRESS'**

Stock No. 55-A-1532

A bib type, white, cotton apron, with adjustable shoulder straps and waistband.



APRON, WAC, FIGHTER COMMAND

Stock No. 55-A-1760

An od, cotton apron issued to WAC personnel in the Fighter Command. The apron closes with tie tapes in the back and has four large pockets piped with varied colored bands for distinguishing the markers placed in them.



JACKET, WOOL, od, WOMEN, WAC, OFFICER'S
Stock No. 55-J-577-10—55-J-577-83

A barathea jacket for winter wear made in regulation style with four buttons, notched collar, two simulated breast pockets with buttoned flaps and two slit pockets on lower front of jacket.



**JACKET, WAC,
SUMMER, OFFICER'S,
TROPICAL WORSTED,
KHAKI**

Stock No.
55-J-568-30—55-J-569-60

An all-wool tropical worsted jacket, made in regulation style with four button closing. It has a notched collar, two simulated breast pockets with buttoned flaps and two slit pockets on lower front.



**JACKET, WAC, MEMBER,
SUMMER**

Stock No.
55-J-549-85—55-J-552-16

A cotton twill jacket made in regulation style with four buttons, notched collar, two simulated breast pockets with buttoned flaps and two slit pockets on lower front of jacket.



**JACKET, WAC, MEMBER,
WINTER**

Stock No.
55-J-552-85—55-J-555-16

A wool covert jacket for winter wear in the same style as the jacket, WAC, member, summer.



OVERCOAT, FIELD, WOMEN'S, O'S

Stock No.
55-O-2655—55-O-2747

This overcoat is the same style as the overcoat, field, women's, but has shoulder loops.



RAINCOAT, PARKA TYPE, WOMEN'S

Stock No.
72-R-2450—72-R-2465

A raincoat of coated fabric in straight cut style with buttoned-on parka hood, five button front with inside storm fly and outside ventilated shoulder yoke across back.

RAINCOAT, PARKA TYPE, WOMEN'S, O

Stock No. 72-R-2505—72-R-2520

This raincoat is the same as the raincoat, parka type, women's, but has shoulder loops.

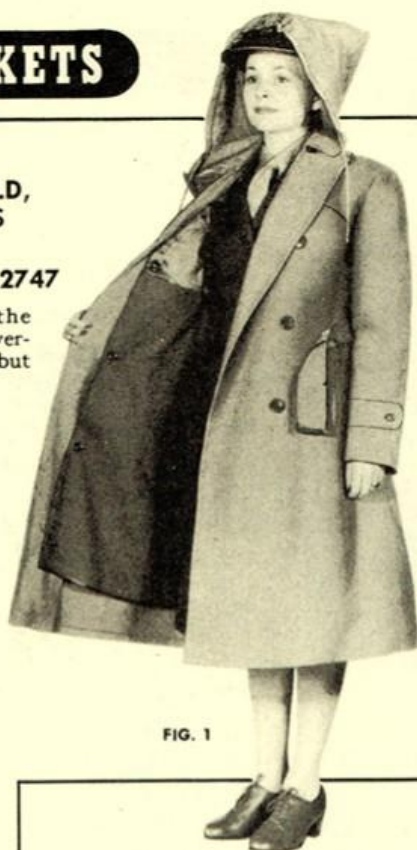


FIG. 1



FIG. 2

OVERCOAT, FIELD, WOMEN'S

Stock No. 55-O-2510—55-O-2602

Figure 1—A double breasted trench coat of wind resistant, water repellent, cotton poplin. It has a buttoned-on parka hood for use in stormy weather, convertible collar and slit pockets. This coat will not be issued until the stock of overcoat, WAC, member, has been exhausted.

Figure 2—The buttoned-in wool liner is designed for use also as a dressing gown and is both warm and practical. The liner has a rayon shoulder lining and binding around all edges.

OVERCOAT, WAC, MEMBER

Stock No. 55-O-3141-16—55-O-3142-44

LIMITED STANDARD—To be issued until exhausted.

A wool serge, fitted coat in double-breasted style with an inverted box-pleat in the middle of the back held by a half belt with two buttons. It has two slash pockets and a convertible collar.

OVERCOAT, WAC, O

Stock No. 55-O-3142-56—55-O-3143-84

LIMITED STANDARD—To be issued until exhausted.

This overcoat is the same as the overcoat, WAC, member, except that it is made of wool doeskin and has shoulder straps.

COAT, WAC, UTILITY, MEMBER

Stock No. 55-C-36102—55-C-36162

LIMITED STANDARD—To be issued until exhausted.

A coat of water repellent cotton poplin with buttoned-in wool liner and buttoned-on parka hood for use in stormy weather. It is double-breasted with convertible collar and two slit pockets.

COAT, WAC, UTILITY, O'S

Stock No. 55-C-36166—55-C-36227

LIMITED STANDARD—To be issued until exhausted.

This coat is the same as the coat, WAC, utility, member, but has shoulder straps.



JACKET, WOOL, od, WOMEN, NURSE'S

Stock No.

55-J-572-10—55-J-572-87

A barathea jacket to be worn with skirt, wool, od, dark, as the winter street uniform. Two simulated breast pockets having flaps only and two lower slit pockets.



COAT, WOOL, COVERT, BLUE, NURSE'S

Stock No.

Stock No. 55-C-37147-35—
55-C-37190-40

A wool covert jacket to be worn with skirt, wool, covert, blue, nurse's. There are two lower bellows pockets having button flaps and belt all around with button closure. It is trimmed with maroon braid on the shoulder loops and sleeves.



JACKET, COTTON, SEERSUCKER, NURSE'S

Stock No.

55-J-180-15—55-J-183-25

A seersucker jacket to be worn over the cotton seersucker uniform. It is for street wear off duty and has two pockets and one-button front closure.



CAPE, od, NURSE'S

Stock No.

55-C-5900—55-C-5910

A wool barathea cape of double fabric to give warmth and drape. It has a newly designed collar with buttoned tab closure.

CAPE, WOOL, COVERT, BLUE, NURSE'S

Stock No.

55-C-6005—55-C-6015

A dark blue, wool covert cape with a maroon wool lining. It has a high neck collar with button closure.



COATS AND JACKETS



FIG. 1



FIG. 2

OVERCOAT, NURSE, COLD CLIMATE, PARKA TYPE

Stock No. 55-O-3127-25—55-O-3128-70

and/or

OVERCOAT, WOMEN'S, PARKA TYPE

Stock No. 55-O-3140-75—55-O-3140-96

Figure 1—Overcoat, nurse, cold climate, parka type, is a wind resistant, cotton, alpaca lined coat with a storm fly which closes by means of snap fasteners and five buttons, and has a detachable alpaca lined hood and a detachable belt with buckle. The hood has draw strings around the face.

Figure 2—The hood attached to the collar.



JACKET, FIELD, od

Stock No. 55-J-200—55-J-304

A short, combat jacket of windproof, water repellent cotton poplin with flannel lining and with button and zipper closure. This jacket is issued to nurses only.



OVERCOAT, WOOL, COVERT, BLUE, REMOVABLE LINING, NURSE

Stock No.

55-O-3146-18—

55-O-3147-63

A full length, navy blue, wool covert coat with a water repellent finish. It is double breasted with a convertible roll collar and notched lapel and has a fitted back with one pleat each side of the center seam. There is a separate belt closing in front with a buckle, and two inside hanging pockets finished with vertical welt openings placed below the belt, one each side of the front closure.



SWEATER, WOOL, BLUE, COAT STYLE, NURSE'S
Stock No. 55-S-70230—55-S-70246

A heavy weight, coat style, wool sweater in rib knit. It has two pockets, belt, long sleeves and closes with six pearl buttons.



SWEATER, WAC

Stock No. 55-S-64930—55-S-64946

A medium weight, coat style, wool sweater in rib stitch. It may be worn underneath a woman's uniform jacket as well as separately. It has long sleeves and two set-in pockets.

SWEATER, COAT STYLE, NURSE'S, HEATHER

Stock No. 55-S-63532—55-S-63546

A coat sweater identical in style with sweater, WAC, but 50% heavier in weight.



WAIST, COTTON, WOMEN'S

Stock No. 55-W-132-15—55-W-133-40

A woman's waist made of broadcloth or poplin with a convertible collar to be turned back for wear without the necktie in warm weather when the jacket is not worn. There are two pockets and darts at waistline for proper fit.



WAIST, WOOL, WOMEN'S

Stock No. 55-W-1230—55-W-1246

A woman's waist made of wool shirting flannel in the same style as the waist, cotton, women's.

SWEATERS, WAISTS AND SHIRTS



**SHIRT, HERRINGBONE TWILL,
WOMEN'S, SPECIAL**

Stock No. 55-S-7020—55-S-7027

A tailored waist of standard fabric and design, for rough field work. The fitted collar can be worn open or closed; darts and pleats give trim appearance and allow for freedom of movement. To be worn with trousers, herringbone twill, women's, special.



WAIST, COTTON, POWDER BLUE

Stock No. 55-W-50—55-W-72

A tailored shirtwaist of preshrunk broadcloth. It has a convertible collar, two patch pockets and long sleeves with folded, double cuffs.



SHIRT, COTTON, SEERSUCKER, NURSE'S

Stock No. 55-S-2102—55-S-2111

A tailored shirt of brown and white striped cotton seersucker in the same fabric as the seersucker hospital uniform. It has a convertible shirt collar which can be worn open or closed, long sleeves with buttoned cuff closure and two buttoned flap pockets. This shirt is to be worn with the slacks, seersucker.



WAIST, COTTON, WHITE

Stock No. 55-W-95—55-W-128

A tailored shirt waist of preshrunk broadcloth with a convertible collar and two pockets, in the same style as waist, cotton, powder blue.



**SKIRT, WOOL, od, DARK,
WOMEN'S, O**

Stock No.

55-S-37010—55-S-37046

A six gore, barathea skirt with narrow buttoned waistband and sufficient hem to allow for possible alteration. It is worn with the jacket, winter.



**SKIRT, WAC, WINTER,
MEMBER'S**

Stock No.

55-S-34075—55-S-34096

A wool covert skirt in the same style as skirt, WAC, summer.



**SKIRT, WOOL, COVERT, BLUE,
NURSE'S**

Stock No.

55-S-36135—55-S-36200

A six gore, wool covert skirt to be worn with coat, wool, covert, blue. It has a narrow waistband, left side closure with a slide fastener and sufficient hem to allow for possible alteration.



SKIRT, WAC, SUMMER

Stock No.

55-S-34010—55-S-34046

A cotton twill skirt for wear with jacket, summer. It is a six gore skirt with side closure and buttoned belt.

**SKIRT, WOMEN'S OFFICER,
TROPICAL WORSTED, KHAKI**

Stock No.

55-S-33710—55-S-33746

An all-wool tropical worsted skirt for wear with jacket, summer. The skirt has six gores with side closure and buttoned belt.

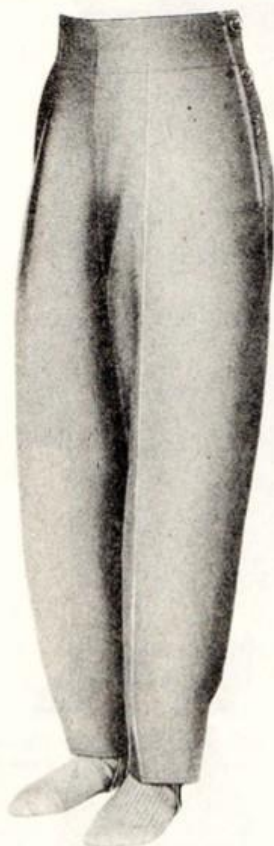


**SKIRT, WAC, WINTER,
OFFICER'S, LIGHT SHADE**

Stock No.

55-S-34310—55-S-34346

A six gore, barathea wool skirt to be worn with jacket, wool, od, women, WAC, officer's. It has a narrow buttoned waistband, slide fastener closure and sufficient hem to allow for possible alteration.



**TROUSERS, WOMEN'S,
OUTER COVER**

Stock No. 55-T-62660—55-T-62698

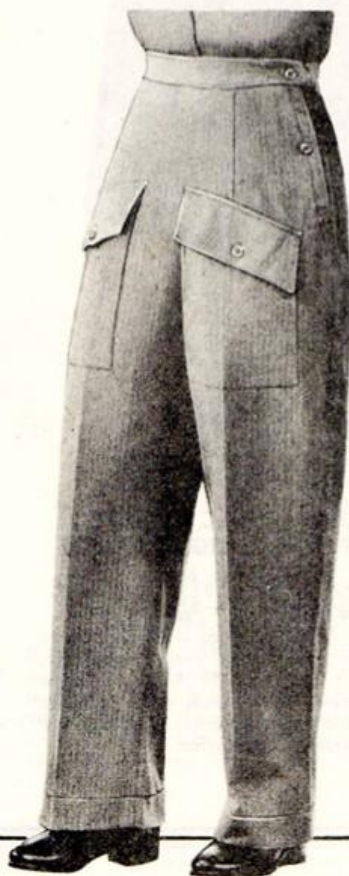
Trousers, women's, outer cover, are made of cotton fabric, wind resistant and water repellent, for wear over a wool liner for field work and outdoor wear in cold climates. The trousers have adjustable closure on waistband and tapered leg closure for close fit under overshoes and leggings.



**TROUSERS, WOOL, LINER,
WOMEN'S**

Stock No. 55-T-62750—55-T-62788

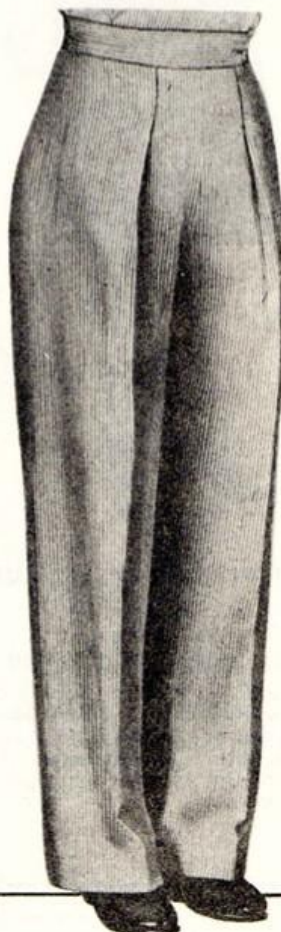
A wool trouser, with knitted rib cuff at the ankle, to be worn under trousers, women's, outer cover, for extra warmth.



**TROUSERS, HERRINGBONE TWILL,
WOMEN'S, SPECIAL**

Stock No. 55-T-38370—55-T-38377

Trousers, herringbone twill, women's, special, are well fitted slacks to be worn with shirt, herringbone twill, for field work and also for mosquito protection. They may be worn with or without leggings, have adjustable button closure on each side of waistband and two large pockets. To be worn with shirt, herringbone twill, women's, special.



**SLACKS, COTTON, SEERSUCKER,
NURSE'S**

Stock No. 55-S-38905—55-S-38923

Tailored slacks made in brown and white striped seersucker, with darts at the waistline for proper fit; left side closure and one slash pocket in the right side seam. A sufficiently wide hem is allowed for alteration in length. They are to be worn with the shirt, cotton, seersucker, nurse's.



CAP, WAC, WINTER, MEMBER'S
Stock No. 73-C-64574-10—73-C-64582

A wool covert cap made in regulation design to match WAC member's uniform jacket and skirt.



CAP, WAC, WINTER, O's
Stock No. 73-C-64592—73-C-64597

A wool barathea cap made in regulation design to match the uniform.

CAP, WINTER, od
Stock No. 73-C-64286—73-C-64302
LIMITED STANDARD—To be issued until exhausted.



CAP, WAC, SUMMER, O's
Stock No. 73-C-64573-40—
73-C-64573-55

The regulation summer cap of tropical worsted which matches the summer jacket and skirt.



CAP, WAC, SUMMER
Stock No.
73-C-64567—73-C-64573-5

The regulation summer cap of WAC members, made from cotton twill to match the summer jacket and skirt.



HAT, WAC, SUMMER
Stock No.
73-H-61960—73-H-61990

A sport type hat, with a soft wide brim, made from khaki twill fabric. Can be turned up or down in back.



CAP, SERVICE, WOOL, od, NURSE'S
Stock No. 73-C-33010—73-C-33035

A wool barathea cap for wear with either the wool or seersucker street uniforms. It has a visor and a front rise which holds the seal of the U.S. and is shaped to fit the head snugly in back.



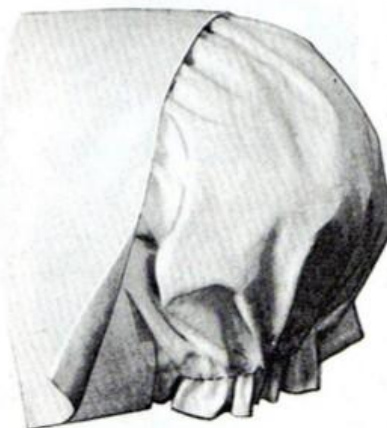
CAP, GARRISON, NURSE'S, BLUE
Stock No. 73-C-18050-10—73-C-18050-55

An oversea style cap of blue, wool covert trimmed with maroon braid.



CAP, SEERSUCKER, NURSE'S
Stock No. 73-C-29000

A cotton cap of new design for hospital duty, which opens flat for easy laundering and packing. It forms easily into cap shape and is held in place with self-lacing in back. The seersucker does not require ironing.



CAP, NURSE'S, WHITE
Stock No.
73-C-28705—73-C-28715

A nurse's, white, cotton cap with plain double front which folds back. The crown portion is adjusted with drawstrings run through a casing at the lower edge.



CAP, WAC, COOK'S, BAKER'S, LAUNDRESS'
Stock No. 73-C-64545

A white, cotton cap with crown shirred into front band. The bottom edge of the crown has draw tapes for adjustment of size.



TOQUE, WOOL, KNIT, M-1941

Stock No.

73-T-10510—73-T-10530

LIMITED STANDARD—To be issued until exhausted.

A wool knit, close fitting hood for protection of the head and neck from cold.



HOOD, CLOTH,

Stock No.

73-H-66700—73-H-66704

LIMITED STANDARD—To be issued until exhausted.

Hood, cloth, is made of windproof, water repellent poplin.



CAP, WOOL, KNIT, M-1941

Stock No.

73-C-64660—73-C-64685

A knit wool cap with reinforced visor. The double fold can be pulled down over the ears for warmth.



HELMET, STEEL, M-1, COMPLETE

Helmet, steel, M-1, complete, worn by all combat troops, consists of the following:

HELMET, STEEL, M-1

Stock No. 74-H-115

LINER, HELMET, M-1

Stock No. 74-L-72

**BAND, HEAD, LINER, HELMET, M-1,
NEW TYPE**

Stock No. 74-B-59

BAND, NECK, LINER, HELMET, M-1

Stock No. 74-B-61—74-B-64



SLIP, WAC

Stock No. 55-S-39980—55-S-40054

A knitted, rayon slip which will not stretch and requires no ironing. It has a four-gore fitted skirt and semi-fitted double bodice top with adjustable shoulder straps.



PANTIES, WAC, SUMMER

Stock No. 55-P-2205—55-P-2213

Panties, WAC, summer, are of knitted rayon and have fitted legs, double fabric crotch, waistband taped in front and elastic back.



PANTIES, WOMEN'S, WINTER

Stock No. 55-P-2005—55-P-2020

Panties, women's, winter, are of medium weight 50% wool-50% rayon, close fitting, rib knit, soft and comfortable, with taped front and elastic back waistband. Leg extends below knee but may be worn folded back above the knee.

PANTIES, WAC, WINTER (75% COTTON—25% WOOL)

LIMITED STANDARD—To be issued until exhausted.

Stock No. 55-P-2285—55-P-2291



VEST, WOMEN'S WINTER

Stock No.

55-V-91-10—55-V-91-25

Vest, women's, winter, is medium weight 50% wool-50% rayon, close fitting, rib knit, soft and comfortable with high round neck and wrist length sleeves.

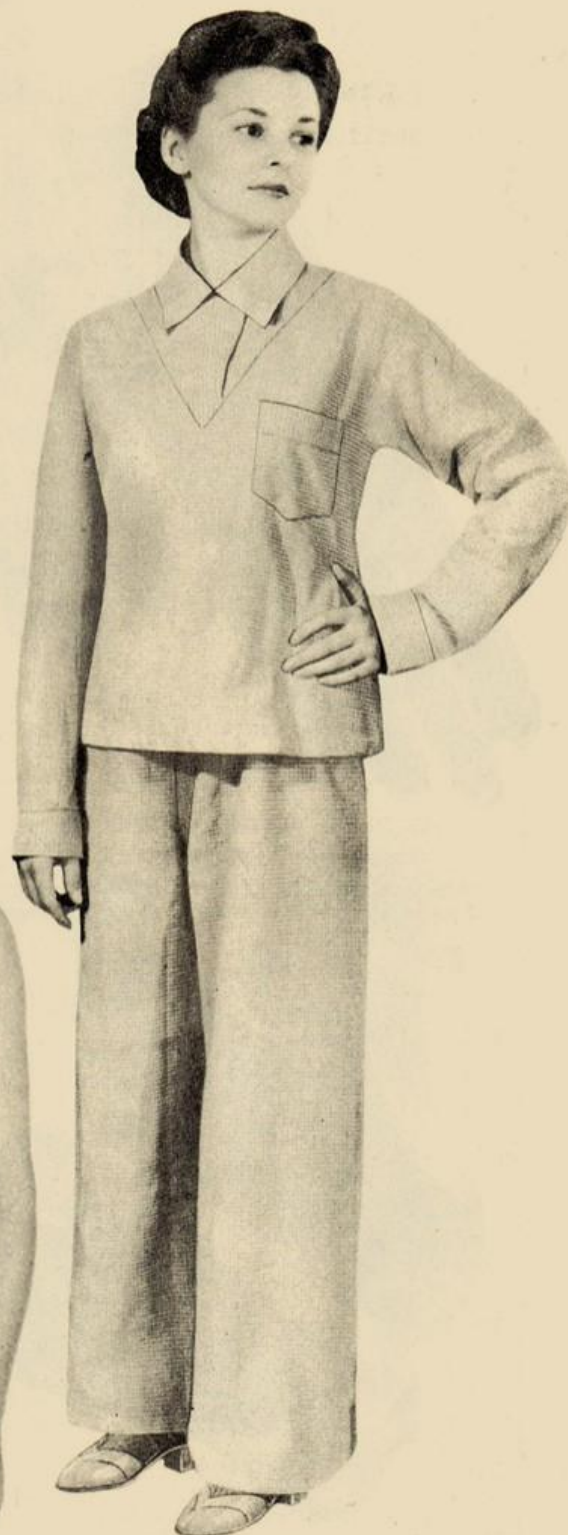


VEST, WAC, WINTER

Stock No. **55-V-95—55-V-101**

LIMITED STANDARD—To be issued until exhausted.

A sleeveless vest with shoulder straps, made of 75% cotton and 25% wool.



PAJAMAS, WAC, WINTER

Stock No. **55-P-1556—55-P-1576**

Preshrunk cotton flannelette pajamas in two piece style with slip-over top having notched collar and long sleeves. The trousers have side closure and draw-string at the waist.

GLOVES



GLOVES, LEATHER, DRESS, WOMEN'S
Stock No. 73-G-27660—73-G-27690

A pull-on, gauntlet style glove made from full grained South African capeskin in golden tobacco brown.



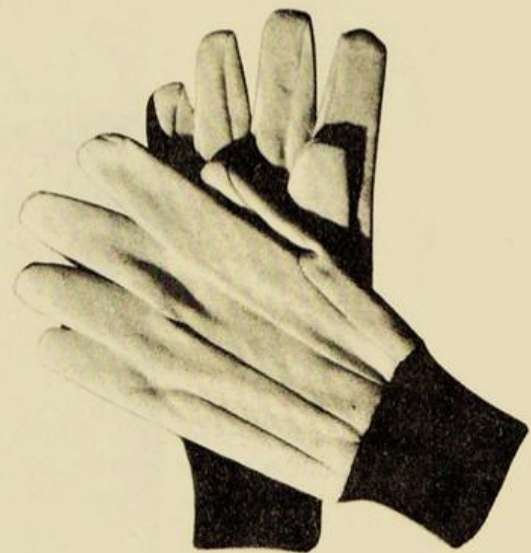
GLOVES, WOOL, od, WOMEN'S
Stock No. 73-G-47000—73-G-47010

A knit wool glove to be worn in cold weather. Glove, WAC, work, cotton, should be worn over this glove when doing manual labor in order to preserve it.



GLOVES, WOOL, BLUE (NURSE'S)
Stock No. 73-G-43252—73-G-43261

A seamless, plain, knit, wool glove, with rib knit cuff.



GLOVES, WAC, WORK, COTTON
Stock No. 73-G-42240

A cotton work glove for all types of labor. Wash in soap and water. Can be rinsed in gasoline when they have been used in working on motor vehicles.

**GLOVES, LEATHER, DRESS, NURSE'S****Stock No. 73-G-27505—73-G-27540****GLOVES, COTTON, WOMEN'S, PROTECTIVE****Stock No. 73-G-12595****GLOVES, MOSQUITO
Stock No. 73-G-35000**

Gloves, mosquito, are worn to protect the hands from mosquitoes. Can be used as a work glove in the tropics. When wet, dry near stove or any available heat but do not burn.

GLOVES, COTTON, WOMEN'S, SPECIAL**Stock No. 73-G-12600****MITTENS, INSERT, TRIGGER FINGER,
WOMEN'S****Stock No. 73-M-2765 and 73-M-2770**

A knit wool mitten with a superimposed index finger. They can be worn with mittens, shell, trigger finger, women's.

**MITTENS, SHELL, TRIGGER FINGER,
WOMEN'S****Stock No. 73-M-3665**

A gauntlet style mitten, combining wind resistant cotton with leather and having a superimposed trigger finger. The back of the gauntlet has a two-piece strap closed with a buckle.



NECKTIE, WOMEN'S
Stock No. 73-N-180

A wrinkle and wear resistant tie of cotton-mohair fabric, similar to the enlisted men's but shorter in length. The four-fold construction permits laundering.



SCARF, WOMEN'S
Stock No. 73-S-14000

An all-wool scarf in twill weave, lightweight and soft to the touch.

NECKTIE, BLACK, NURSE'S
Stock No. 73-N-90

MUFFLER, WOOL, BLUE, NURSE'S
Stock No. 73-M-9000

A soft, knitted, all-wool muffler, nine inches wide and fifty-four inches long.



BAG, UTILITY, NURSE'S
Stock No. 74-B-56-35

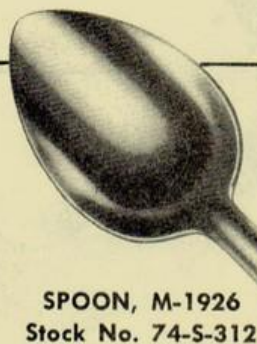
A leather handbag with pockets and change purse. The lining is made of cotton poplin, od in color. The strap can be adjusted for wearing over the shoulder or shortened for carrying in the hand, or can be removed altogether to allow for carrying under the arm.

BAG, UTILITY, WAC
Stock No. 74-B-56-50

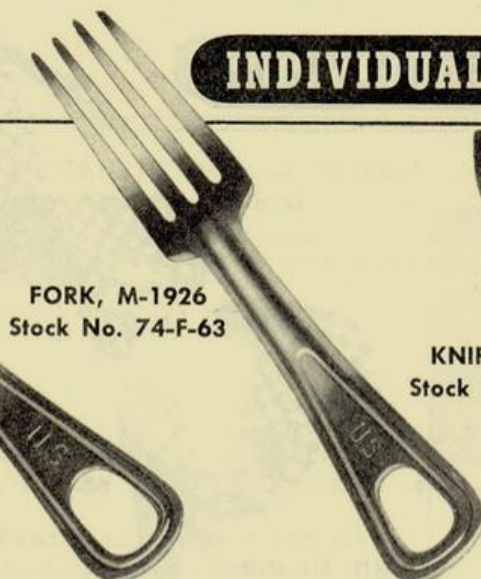
A leather handbag with over-shoulder strap and lined with od poplin.

INDIVIDUAL EQUIPMENT

Page
21



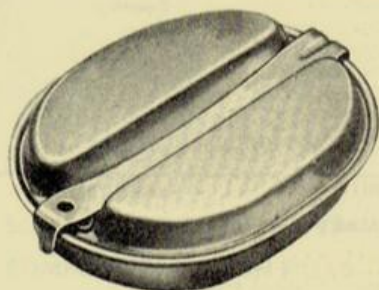
SPOON, M-1926
Stock No. 74-S-312



FORK, M-1926
Stock No. 74-F-63



KNIFE, M-1926
Stock No. 74-K-60



CAN, MEAT, M-1932

Stock No. 74-C-62 (illustrated)

CAN, MEAT, M-1942

Stock No. 74-C-65

CAN, MEAT, STAINLESS STEEL

Stock No. 74-C-66

Fig. 1

CAN, MEAT, M-1932

Fig. 2

BOTTOM PART OF CAN, MEAT, M-1932

This is the standard eating receptacle.

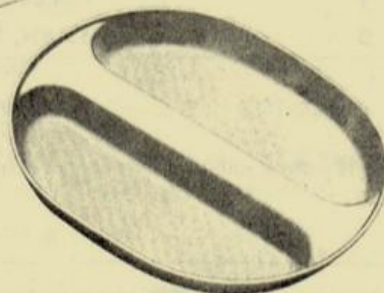
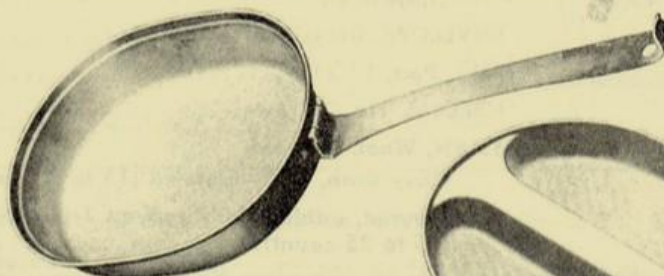


Fig. 3

TOP PART OF CAN,
MEAT, M-1932

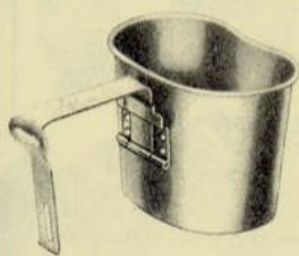


Fig. 1—CUP

CUP, M-1910

Stock No. 74-C-314

CUP, M-1942

Stock No. 74-C-317

CUP, stainless steel

Stock No. 74-C-317-25

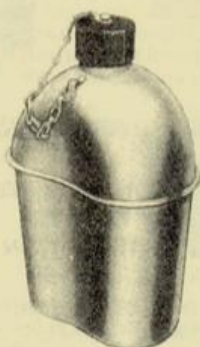


Fig. 2—CANTEEN

CANTEEN, M-1910

Stock No. 74-C-80

CANTEEN, M-1942

Stock No. 74-C-83

CANTEEN, plastic

Stock No. 74-C-85

CANTEEN, stainless
steel

Stock No. 74-C-87

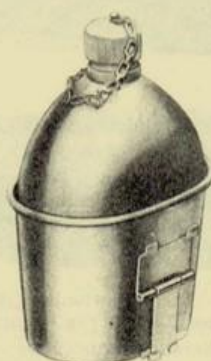


Fig. 3—Canteen fits into cup,
whose handle folds, for com-
pact carrying.



COVER, CANTEEN,
DISMOUNTED,

M-1910

Stock No. 74-C-300

Cover, canteen, dis-
mounted, M-1910, is a
carrier for the water
canteen and through the
use of the felt lining
serves as an insulation to
keep the contents of the
canteen cool.

INDIVIDUAL EQUIPMENT

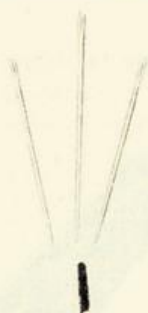


FIG. 1



FIG. 2



FIG. 3

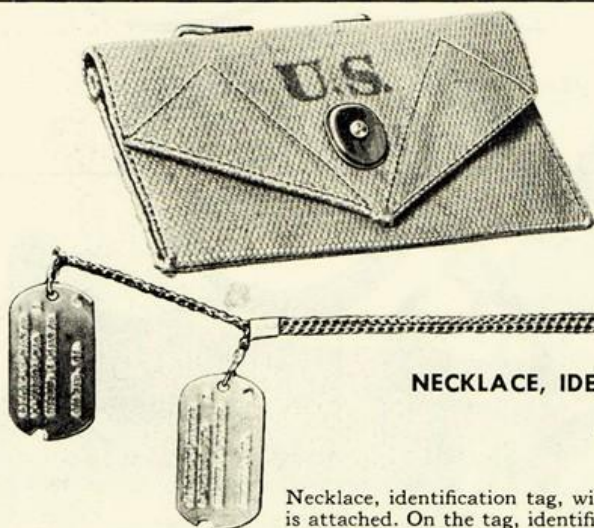


FIG. 4

KIT, DARNING Stock No. 27-K-250

Figure Number	Stock Number	COMPONENTS	Quantity
4		ENVELOPE, Glassine.....	1
2		FELT, Pad, 1" x 1 1/2".....	1
1		NEEDLES, No. 2 Crewel.....	3
3		YARN, Wool, In Braid:	
		Olive drab, 2 ply worsted (15 to 25 count).....	26 2/3 yds
		Scoured, unbleached, undyed 2 ply worsted (15 to 25 count).....	26 1/3 yds

NOTE—Stock numbers for the above components are not shown because the same are not issued separately.



POUCH, FIRST AID PACKET Stock No. 74-P-260

The pouch, first aid packet, illustrated is model M-1942. Previous models 1910 and 1924 are also in use but are designed to hold the old style packet which is somewhat shorter. This pouch which contains the first aid pack issued by the Medical Department is attached by a double hook to either the pistol belt, cartridge belt, or any other equipment with an attaching tab.

NECKLACE, IDENTIFICATION TAG, WITH EXTENSION Stock No. 74-N-300 TAG, IDENTIFICATION Stock No. 74-T-60

Necklace, identification tag, with extension, is the chain on which the tag, identification, is attached. On the tag, identification, the following information is required: Name; Serial Number; Date of Tetanus Inoculation; Blood Type; Person to Notify; Religion.



BELT, PISTOL OR REVOLVER, M-1936 Stock No. 74-B-265

Belt, pistol or revolver, M-1936, is used to carry certain individual equipment such as canteen, pouch, mess equipment, etc.



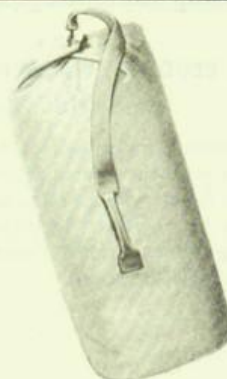
STRAP, CARRYING, BAG, FIELD Stock No. 74-S-333

A strap used to carry the bag, canvas, field, od, M-1936, the bag, ammunition, and the case, canvas, dispatch.



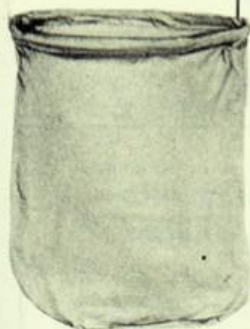
BAG, CANVAS, FIELD, od, M-1936
Stock No. 74-B-53

A small canvas bag to carry personal equipment in the field which can be worn over the shoulder when using strap, carrying, bag, field.



BAG, DUFFEL
Stock No. 74-B-54-55

The bag, duffel, has been developed as a replacement for the bag, barrack, for troops sent overseas. It is a more durable container of larger capacity and greater ease of carrying and although padlocks will not be issued it can be locked if necessary.



BAG, BARRACK, BLUE **BAG, BARRACK, od**
Stock No. 74-B-50 **Stock No. 74-B-50-10**

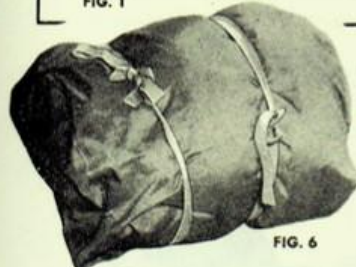
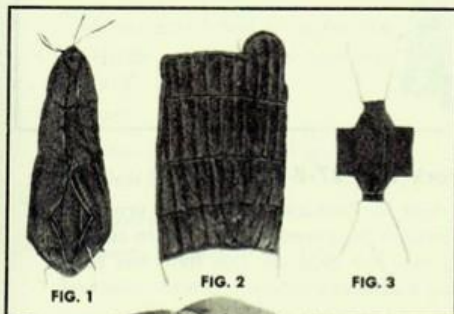
BAG, BARRACK, od, WATER REPELLENT
Stock No. 74-B-50-25

Bag, barrack, is used for carrying clothes and laundry. For carrying of clothing and equipment by troops going overseas it is intended to replace the bag, barrack, with the bag, duffel, although it will still serve as a laundry bag where the bag, duffel, is issued.

BLANKET, WOOL, od, M-1934—Stock No. 27-B-678
COMFORTER, COTTON FILLED—Stock No. 27-C-7400
COMFORTER, WOOL FILLED—Stock No. 27-C-7410

TOWEL, BATH, od—Stock No. 27-T-28590
TOWEL, BATH, WHITE—Stock No. 27-T-28600
LIMITED STANDARD—To be issued until exhausted.

BRASSARD, ARM, MP, NEW TYPE—Stock No. 71-B-1338



BAG, SLEEPING, ARCTIC
Stock No. 27-B-265—Large

Stock No. 27-B-270—Regular

Fig. 1—Inner Comforter with Zipper
Fig. 2—Outer Comforter with Zipper
Fig. 3—Waterproof Wrap Cover

Fig. 4—Bag Partially Opened
Fig. 6—Bag Rolled Up

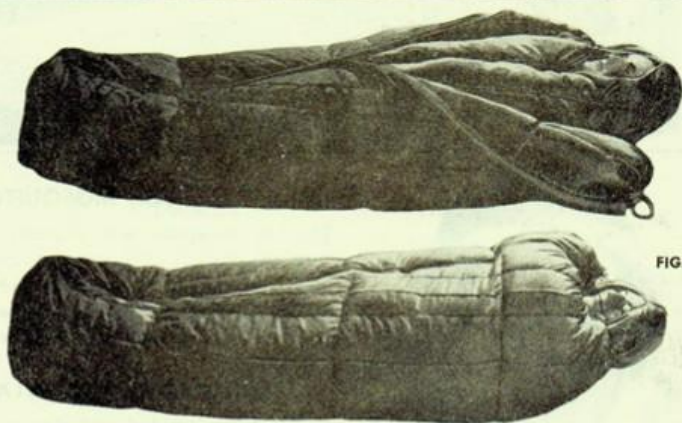


FIG. 4

FIG. 5

Bag, sleeping, Arctic, M-1942, consists of two down and feather filled cases for use in extreme low temperatures. The inner bag is mummy shaped. A full length zipper is used to close the quilt shaped outer bag. A waterproof wrap case, having flaps and tie tapes, is provided for carrying both rolled bags. The stock of this bag is low.

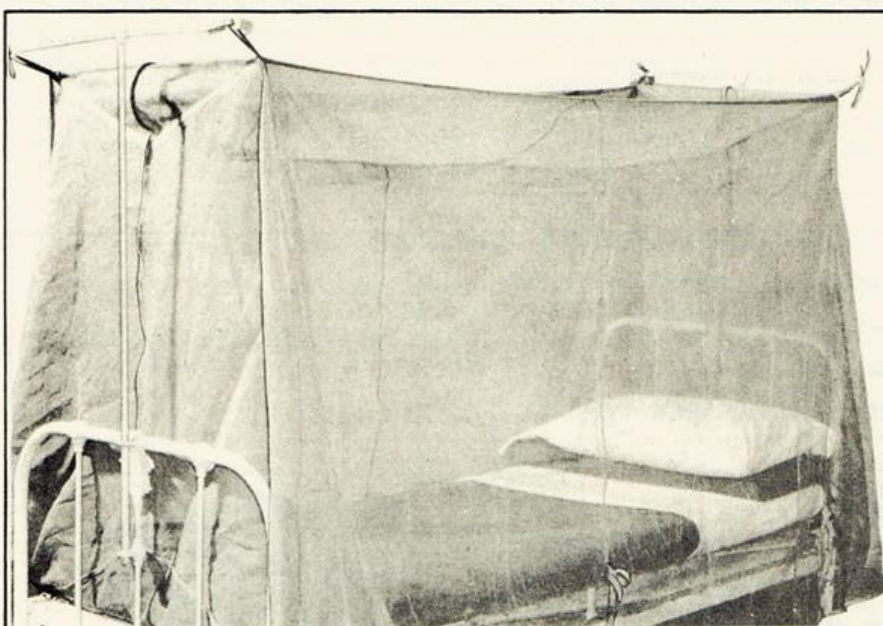
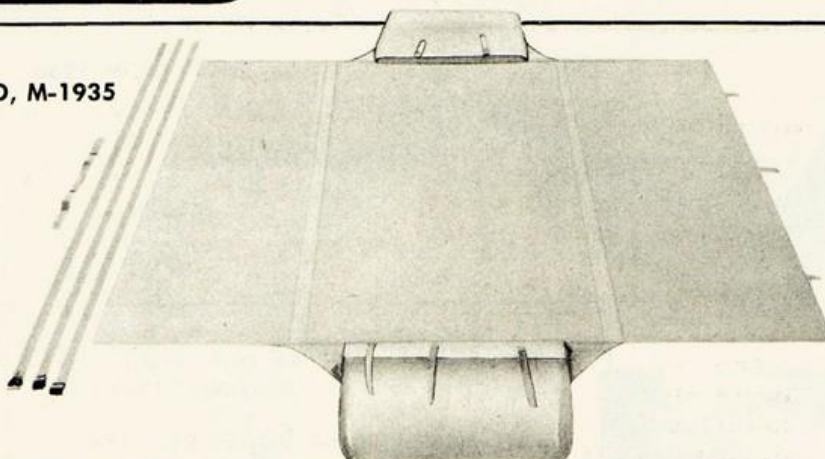
There is also being issued under the same stock number a bag, sleeping, Arctic, which consists of two mummy shaped down and feather filled bags; case, water repellent, for bag, sleeping, mountain, and waterproof cover, for use in extreme low temperatures. Bag, sleeping, mountain, is used as the inner bag, and the outer bag is of similar design and construction. Tie tapes on the foot of bag, sleeping, Arctic, extend through openings in the bottom seam of case, water repellent, to hold the bags in a compact unit when rolled. A waterproof cover is provided to protect the bag. This bag is not illustrated.

INDIVIDUAL EQUIPMENT

ROLL, BEDDING, WATERPROOFED, M-1935

Stock No. 24-R-110

Roll, bedding, waterproofed, M-1935, is a water-repellent treated fabric roll to be used for carrying bedding and other articles of personal equipment or clothing. When unrolled it may also be used as a ground sheet.



BAR, INSECT, FIELD

Stock No. 27-B-343

Bar, insect, field, is a netting canopy of relatively small mesh, designed for protection against sandflies and other small insects as well as mosquitoes. It has been basically designed for use with the shelter, tent, having tie tapes that correspond in location to the pegs of the tent, but it may also be used over cots or hospital beds. Shrinkage which will occur in laundering can be removed by stretching in use.



HEADNET, MOSQUITO, M-1942

Stock No. 27-H-195

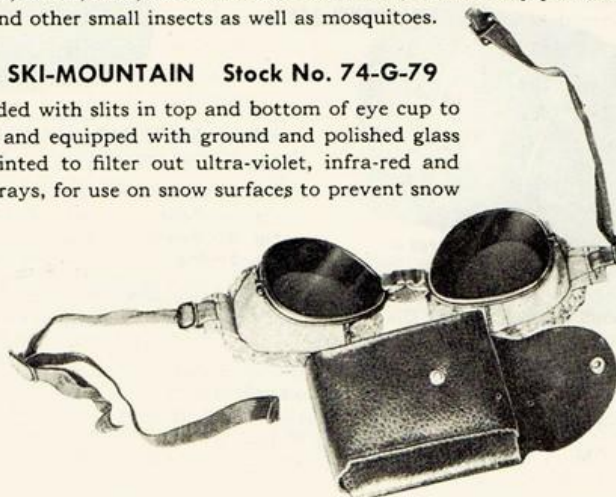
Headnet, mosquito, is provided with a featherbone grommet to keep it away from the face, and is attached by means of a drawstring at the top to the helmet or other headgear. A drawstring at the bottom permits adjustment across the shoulders.

BAR, MOSQUITO Stock No. 27-B-348

The bar, mosquito, was originally developed for barracks use, and is provided with a wide skirt of sheeting around the bottom to prevent damage when tucked in at the bottom of a metal wire-spring cot. For field use this item has been replaced by the bar, insect, field, which has a smaller mesh, and thereby protects against sandflies and other small insects as well as mosquitoes.

GOGGLES, SKI-MOUNTAIN Stock No. 74-G-79

A goggle provided with slits in top and bottom of eye cup to reduce fogging and equipped with ground and polished glass lenses, green tinted to filter out ultra-violet, infra-red and excessive light rays, for use on snow surfaces to prevent snow blindness.



A

Anklelets, Wool, Women's (also see socks and stockings)	2
APRON,	
WAC, Cook's, Baker's, Laundress'	4
WAC, Fighter Command	4

B

BAG,	
Barrack, Blue	23
Barrack, od	23
Barrack, od, Water Repellent	23
Canvas, Field, od, M-1936	23
Duffel	23
Sleeping, Arctic	23
Utility, Nurse's	20
Utility, WAC	20
BAR,	
Insect, Field	24
Mosquito	24
Belt, Pistol or Revolver, M-1936	22
Blanket, Wool, od, M-1934	23
Brassard, Arm, MP, New Type	23

C

CAN,	
Meat, M-1932	21
Meat, M-1942	21
Meat, Stainless Steel	21
CANTEEN,	
M-1910	21
M-1942	21
Plastic	21
Stainless Steel	21
CAP, (also see hat)	
Garrison, Nurse's, Blue	14
Nurse's, White	14
Seersucker, Nurse's	14
Service, Wool, od, Nurse's	14
WAC, Cook's, Baker's, Laundress'	14
WAC, Summer	13
WAC, Summer, O's	13
WAC, Winter, Member's	13
WAC, Winter, O's	13
Winter, od	13
Wool, Knit, M-1941	15
CAPE,	
od, Nurse's	7
Wool, Covert, Blue, Nurse's	7
COAT, (also see overcoat)	
WAC, Utility, Member	6

COAT, (Continued)	
WAC, Utility, O	6
Wool, Covert, Blue, Nurse's	7

COMFORTER,	
Cotton Filled	23
Wool Filled	23
Cover, Canteen, Dismounted, M-1910	21
CUP,	
M-1910	21
M-1942	21
Stainless Steel	21

D

Dress, WAC, Working, Cook's, Baker's, Laundress'	4
--	---

F

Fork, M-1926	21
--------------	----

G

GLOVES, (also see mittens)	
Cotton, Women's, Protective	19
Cotton, Women's, Special	19
Leather, Dress, Nurse's	19
Leather, Dress, Women's	18
Mosquito	19
WAC, Work, Cotton	18
Wool, Blue (Nurse's)	18
Wool, od, Women's	18
Goggles, Ski-Mountain	24

H

Hat, WAC, Summer (also see cap)	13
Headnet, Mosquito, M-1942	24
Helmet, Steel, M-1, Complete	15
Hood, Cloth	15

J

JACKET,	
Cotton, Seersucker, Nurse's	7
Field, od	8
WAC, Member, Summer	5
WAC, Member, Winter	5
WAC, Summer, Officer's, Tropical Worsted, Khaki	5
Wool, od, Women, Nurse's	7
Wool, od, Women, WAC, Officer's	5

K

Kit, Darning	22
Knife, M-1926	21

L

Leggings, Canvas, Women's	1
---------------------------	---

M

MITTENS, (also see gloves)	
Insert, Trigger Finger, Women's	19
Shell, Trigger Finger, Women's	19
Muffler, Wool, Blue, Nurse's (also see scarf)	20

N

Necklace, Identification Tag, With Extension..... 22

NECKTIE,

Black, Nurse's..... 20

Women's..... 20

O

OVERCOAT, (also see coat)

Field, Women's..... 6

Field, Women's, O's..... 6

Nurse, Cold Climate, Parka Type..... 8

WAC, Member..... 6

WAC, O..... 6

Wool, Covert, Blue, Removable Lining, Nurse..... 8

OVERSHOES,

Arctic, Nurse's..... 1

Arctic, Women's, 4-Buckle..... 1

Low, Women's..... 1

P

Pajamas, WAC, Winter..... 17

PANTIES,

WAC, Summer..... 16

WAC, Winter (75% Cotton—25% Wool)..... 16

Women's, Winter..... 16

Pouch, First Aid Packet..... 22

R

RAINCOAT,

Parka Type, Women's..... 6

Parka Type, Women's, O..... 6

Roll, Bedding, Waterproofed, M-1935..... 24

S

Scarf, Women's (also see muffler)..... 20

SHIRT, (also see waist)

Cotton, Seersucker, Nurse's..... 10

Herringbone Twill, Women's, Special..... 10

SHOES,

Felt, Women's..... 1

Field, Women's..... 1

Nurse's, Black..... 1

Nurse's, White..... 1

Service, Women's, Low..... 1

SKIRT,

WAC, Summer..... 11

WAC, Winter, Member's..... 11

WAC, Winter, Officer's, Light Shade..... 11

SKIRT, (Continued)

Women's Officer, Tropical Worsted, Khaki..... 11

Wool, Covert, Blue, Nurse's..... 11

Wool, od, Dark, Women's, O..... 11

Slacks, Cotton, Seersucker, Nurse's..... 12

Slip, WAC..... 16

Socks, Wool, Ski (also see stockings and anklets)..... 2

Spoon, M-1926..... 21

Strap, Carrying, Bag, Field..... 22

STOCKINGS, (also see anklets and socks)

Cotton, Beige, Women's..... 2

Rayon, Women's..... 2

WAC, Ankle..... 2

Wool, Knee Length, Women's..... 2

SUIT, (also see uniform)

WAC, Exercise..... 4

SWEATER,

Coat Style, Nurse's, Heather..... 9

WAC..... 9

Wool, Blue, Coat Style, Nurse's..... 9

T

Tag, Identification.....

Toque, Wool, Knit, M-1941.....

TOWEL,

Bath, od..... 23

Bath, White..... 23

TROUSERS, (also see slacks)

Herringbone Twill, Women's, Special..... 12

Women's, Outer Cover..... 12

Wool, Liner, Women's..... 12

U

UNIFORM, (also see suit)

Cotton, Seersucker, Nurse's..... 3

Nurse's, Cotton..... 3

V

VEST,

WAC, Winter..... 17

Women's, Winter..... 17

W

WAIST, (also see shirt)

Cotton, Powder Blue..... 10

Cotton, White..... 10

Cotton, Women's..... 9

Wool, Women's..... 9