

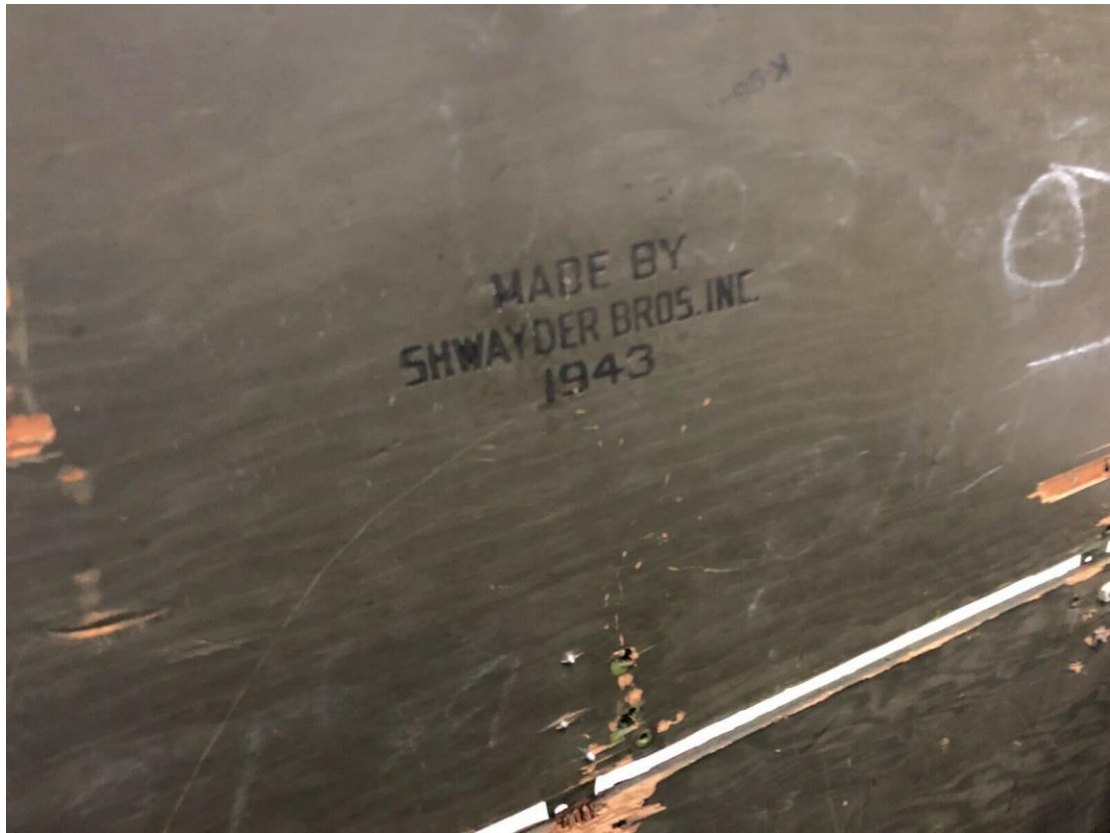
A Brief Study of WW II Footlockers by Scott Lance

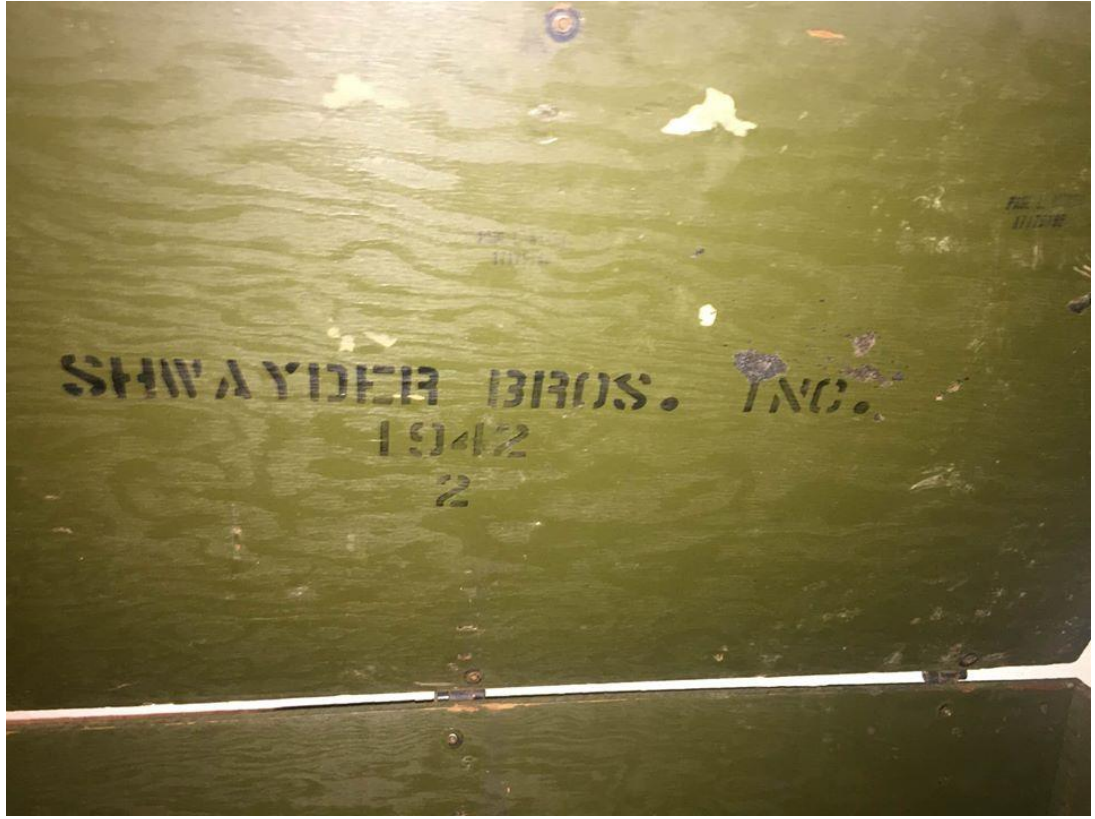
WWII plywood footlockers made by various makers c. 1942-1943. These images were taken from an internet search on 19 MAR 2020.

[WW2 Era Footlockers](#)

Schwayder Brothers, Denver, CO (Samsonite Luggage)





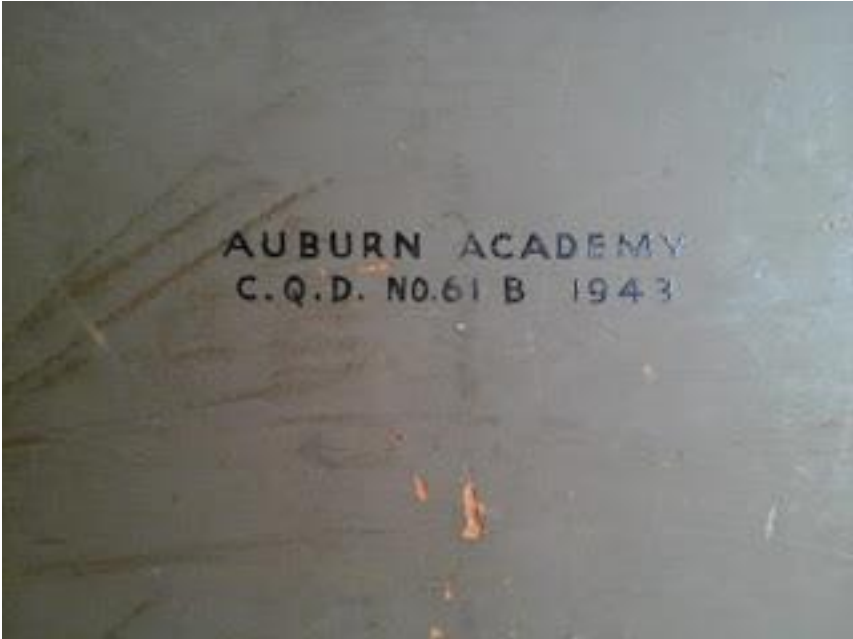




American Hardware Company, Inc.



Auburn Academy



Neevel Manufacturing Company



Able and Bach, Inc.



Reinholdt and Lewis

