

The War and Beyond: 1943-1960

#28 - 1943-1945 BLACK CRACKLE

The 1943-1945 model was different from the 1942 model in that it had a three barrel hinge. The 1943-1945 insert was also different from the 1942 model in that the steel was wrapped the same direction as other inserts. The insert's flint wheel and chimney were like that of the 1937-1942 models. This model still had a flat bottom that was slightly curved outward. The Zippo logo with the 2032695 patent number was stamped on the insert. The 1942 model has no such logo stamped on its insert. Zippo used this same hinge design on the early model 1946's. There were no insignia models produced in 1943 but Zippo again produced insignias in 1944 and 1945.

- #28 A - Plain with black crackle paint
- #28 B - Engraved Initials, done by Zippo
- #28 C - "In Memory of Ernie Pyle" Zippo (600 produced)
- #28 D - Mr. Donald Hyde's "TOKYO" Zippo ("Battlefield Engraved" - only one was ever produced)
- #28 E - 1944 and 1945 Insignia Models
- #28 F - "Trench Art" Military Emblems
- #28 G - Crossed Guns (engraved)

Zippo stated that during World War II all models were "Shipped to the Seat of War," but Zippo produced several "special order" models made of steel with a three barrel hinge and a "high polish" finish, that either had a monogram or signature.

- #28 H - Above Mentioned Variety - Three barrel steel model with high polished finish, with or without a monogram or signature facsimile.

Sterling "Pocket" models

I have documented four distinct "types" of Sterling Models that were manufactured between 1946 and 1995. I have given these models access numbers 29, 30, 31, and 32. I felt it was better to group them together than to separate them chronologically.

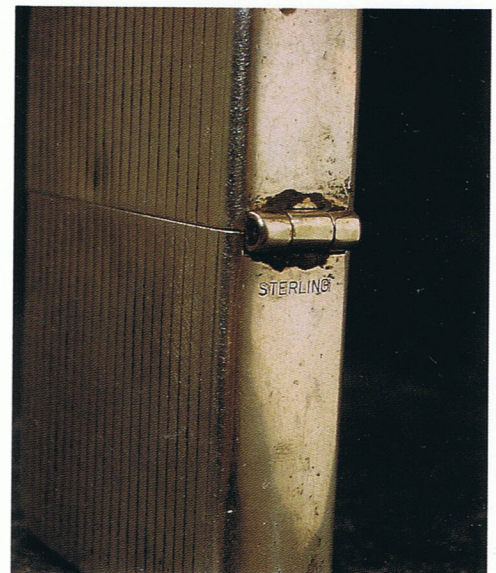
Whether you are trying to date sterling, silver-filled, or gold-filled models take special note of the insert. The insert can be very helpful in dating your lighter, if you know for sure that your lighter has the original insert.

#29 - TYPE 1 - 1946 to early 1948 sterling model

Sterling models made during this time span had sterling written under the three barrel hinge in block



#28 A, \$225-\$300



#29 A, \$100-\$150