

- #9 F - Engraved Generic Advertising
- #9 G - Generic Metallique Advertising
- #9 H - 14k Gold Model
- #9 I - Belle Kogan Series Designs (Zippo model numbers K1, K2, K5, & K7; with black enamel inlay; regular production models)

\*See 1938 Esquire advertisement on page 177 for description.

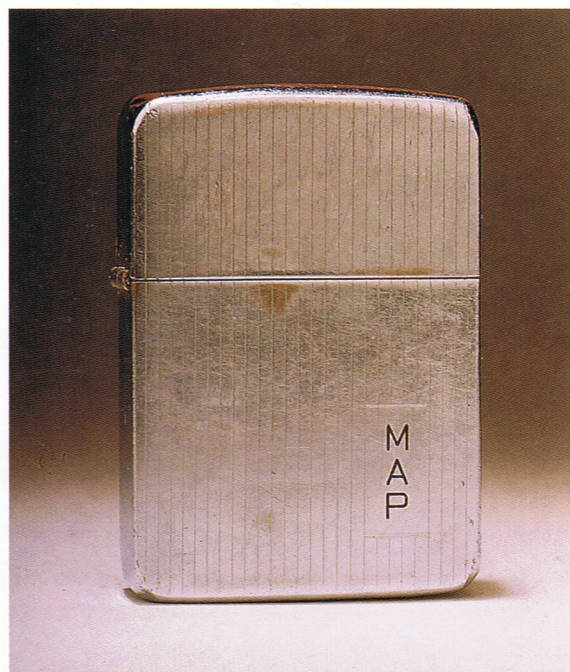
- #9 I - K1
- #9 I - K2
- #9 I - K5
- #9 I - K7

#9 I-K7 and 9 I-K5 are two Belle Kogan Designs that were brass with gold plate. They were never chrome plated with enamel inlay. These are prototype examples and are far rarer and worth more than regular production pieces.

- #9 J - High Polished Chrome Case
- #9 K - Gold-Filled (plain) Example in Esquire ad
- #9 L - Gold-Filled (engine-turned) Example in Esquire ad
- #9 M - Sports Motifs and Facsimile Signature (Extremely rare to find three different engravings as, well as being highly polished on this model.)
- #9 N - Sailfish (Access #17 E)
- #9 O - 1938 Slim Test Model (Zippo's first attempt at a slim lighter. Note the small three barrel hinge and how Zippo's R&D department took a regular size model and cut it down. This also has a small U-shaped cam stop.)
- #9 P - Test model insert.



#9 A, \$225-\$300



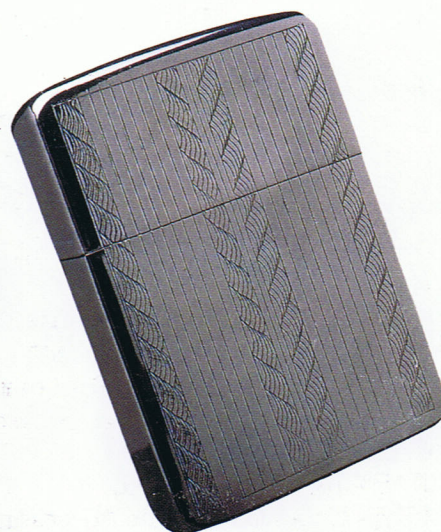
#9 C



#9 E, \$700-\$800



#9 I-K2, obverse, \$1400-\$1600



#9 I-K2, reverse