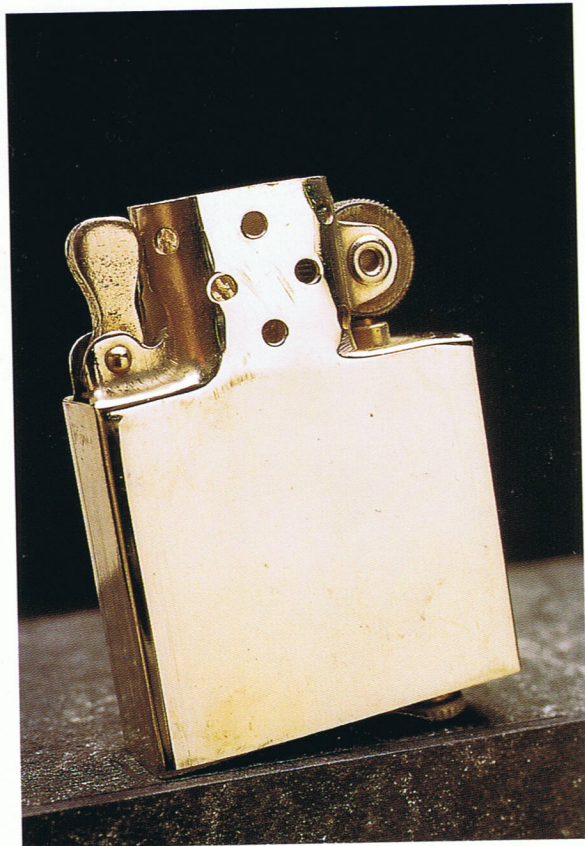


Access numbers 9-12 are the brass drawn case variety, with rounded corners. The inserts in numbers 9-12, are the brass drawn tube style. This insert was also used in 1937. The cases have a flat bottom that is slightly pushed outward. In contrast, access numbers 1-8 had totally flat bottoms and sharp 90 degree angle corners.



Circa 1937-1941 insert.



#1 A, hinge view.

#1: 1932 model

This is the first model that Blaisdell produced. This model is approximately 1/4 inch taller than models manufactured today. The case is 2-7/16 inches tall, also making it 1/4 inch taller than 1934-36 outside hinge plate models.

#1 A - Plain

#1 A1 - Solid brass (neither the insert nor the case was ever chromed).

#1 B - Metallique Initials

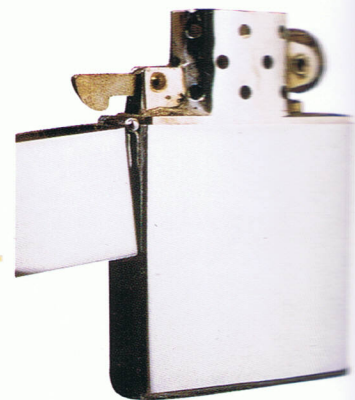
#1 C - This variety has a generic metallique applied to it.

#1 D - This lighter has the original hinge but the piston, in the insert, has been removed by Zippo and replaced with a humped or flat spring.

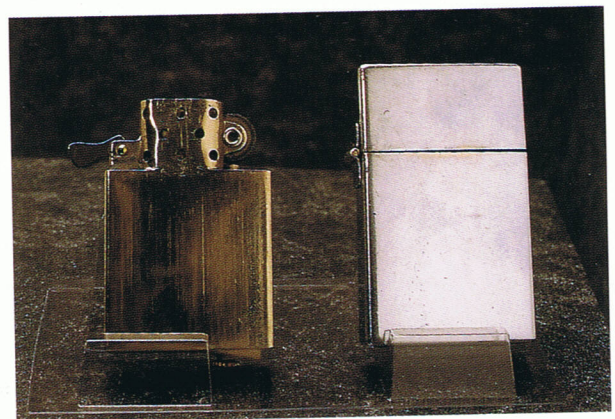
#1 E - This lighter does not have the original hinge on the case or the original piston in the insert. The hinge, piston, cam, and flint wheel have been repaired and replaced by Zippo. The piston is replaced with a flat or humped spring.



Closed



#1 A, \$7,500-\$9,000
Open



#1 A, disassembled.